

FRESNO COUNTY DEPARTMENT OF BEHAVIORAL HEALTH - OUTCOMES

PROGRAM TITLE: Co-Occurring FSP

PROVIDER: Turning Point

PROGRAM DESCRIPTION: Provides Co-Occurring Full Service Partnership services to a minimum of 60 adults and older adults at any given time with serious mental illness and substance abuse disorders who are homeless or at risk of homelessness, frequent users of crisis services, and/or incarcerated. Provides a welcoming, recovery-oriented, integrated, co-occurring disorder capable service delivery model that uses innovative intervention to reduce crisis services, admissions into inpatient facilities, or jails. Based on FSP State Data Collection Records (DCR) the Co-Occurring program had 46 active partners during calendar year 2010 (January 1, 2010-December 31, 2010).

AGES SERVED:

Children
 Adult

TAY
 Older Adult

DATES OF OPERATION: July 21, 2009 - current

DATES OF DATA REPORTING PERIOD: 7/09 – 12/10

OUTCOME GOAL

OUTCOME DATA

Reduce incidents of inpatient psychiatric hospitalizations. (Table 1)

Y1 63% reduction
Y2 100% reduction

Reduce incidents of homelessness.

Y1 23% reduction
Y2 100% reduction

Reduce incidents of incarcerations.

Y1 15% reduction
Y2 100% reduction

Consumers will be able work towards moving to a lower level of care within the county/community based system.

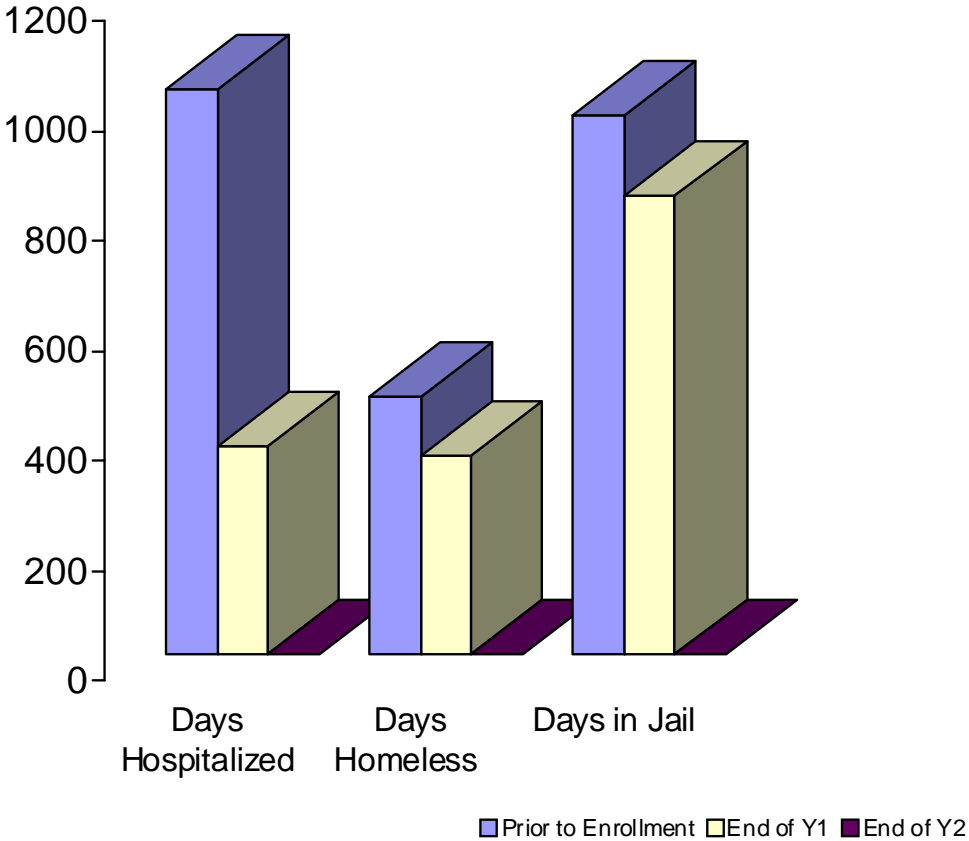
July 2010 – Dec 2010
Total Average Locus Scores were reduced by 18%. This reflects a significant reduction. See Table 2

DEPARTMENT RECOMMENDATION(S): Based on outcome and contract measurements reported, the Department recommends to continue MHSA funding for this program for FY 2011-12.

FRESNO COUNTY DEPARTMENT OF BEHAVIORAL HEALTH - OUTCOMES

Table 1

Co-Occurring FSP Comparison of Consumers' Outcomes Prior to and Since Enrollment



Average of 60 clients seen at any given time

FRESNO COUNTY DEPARTMENT OF BEHAVIORAL HEALTH - OUTCOMES

Table 2

Reduction in LOCUS Scores:

PAF LOCUS	6 Months LOCUS	Reduction
20	18	2
24	16	8
27	24	3
24	21	3
23	18	5
22	15	7
27	23	4
19	18	1
26	18	8
20	19	1
27	22	6
27	23	4
26	22	4
Total	Total	Total
313	257	56

PAF is the Partnership Assessment Form given to FSP clients when they are first admitted into the program.

The LOCUS provides an objective measure to help determine consumer service needs. It also provides a way to measure consumer progress and treatment outcomes.

A higher score indicates a higher level of service need.