

County of



**Department of Agriculture**

Cosmo C. Insalaco  
Agricultural Commissioner

Clare Berryhill, Director  
California Department of Food and Agriculture

The Honorable Board of Supervisors  
County of Fresno

A. Vernon Conrad, Chairman  
Deran Koligian                      Sharon Levy  
Betty Ramacher                      Jeff Reich

Allan H. Colman  
County Administrative Officer

I am pleased to submit the 1983 Agricultural Crop and Livestock Report for the acreage, production, and value of agricultural crops and products in Fresno County.

1983 represents the fourth largest gross returns in our history, \$1,727,319,500. This also establishes a loss of \$128,414,000 or a 6.9 percent reduction from the 1982 Agricultural Crop and Livestock Report. Timber harvest is included for the third time in the 1983 report.

The values published in this report represent gross figures only and not net income to the growers.

I sincerely appreciate the professional and dedicated work performed by Deputy Agricultural Commissioner Jerry Prieto, Supervising Agricultural Biologist L. V. Hawley, Agricultural Biologists Thomas M. Schackmann, Tye T. Hafner, and Susan L. Fitzpatrick as well as the staff of the Agricultural Commissioner's Office for the preparation of this report.

My thanks to the many individuals, related agencies and members of the agricultural industry for their contributions in the compilation of this report.

Respectfully submitted,

Cosmo C. Insalaco  
Agricultural Commissioner

*In praise of Farmers*

*When tillage begins, other arts follow. The farmers therefore are the founders of human civilization.*

*--Daniel Webster (1840)*

*Cultivators of the earth are the most valuable citizens, the most independent, the most virtuous and tied to their country by the most lasting bonds.*

*--Thomas Jefferson (1785)*

*The cover. . .*

*Aerial photograph of Fresno County Westside.*

## 1983 IN RETROSPECT

Fresno County's 1983 gross agricultural receipts of \$1,727,319,500 reflect a \$128,414,000 or 6.9% reduction from the 1982 gross receipts.

The reduced gross returns to growers in 1983 reflect the facts that significant acreages of cotton, corn, wheat and barley were set aside in the PIK program and the substantially lower price for raisins. Adverse winter and spring weather also interrupted some planting schedules and affected pollination and crop set in some tree fruit and nut crops. Extensive flooding in some areas resulted in the loss of fruit and nut trees due to oxygen depletion.

**FIELD CROPS:** Gross value decreased 5.8% or \$29,512,000. Cotton, the 1983 number one crop, decreased in total value 8.3% or \$28,593,000; acreage decreased 21.3% or 87,000 acres. Rice decreased in total value 22.6% or \$1,032,000, reflecting an acreage reduction of 39.8%. Wheat and barley grain combined acreage decreased 20.6% or 22% in total value of \$10,101,000.

**SEED CROPS:** Gross value decreased .4% or \$159,000. Alfalfa seed decreased 18.9% or \$6,561,000 in total value reflecting reduced acreage of 12,000 acres.

**VEGETABLE CROPS:** Gross value increased 8.5% or \$22,765,000. Head lettuce is included in the top ten commodities in 1983 and reflected an increase in total value of 70.6% or \$22,698,000. Acreage, yield and price in the spring were all up over 1982. Garlic acreage increased 43.0% or 3,590 acres. Total value increased 21.5% or \$4,071,000. Cantaloupe decreased in acreage 23.0% or 6,900 acres. Total value decreased 27.7% or \$17,797,000. Processing tomato acreage increased by 6,130 or 11.3%. Reduced yield and price per ton reflected little change in total value.

**FRUIT AND NUT CROPS:** Gross value decreased 13.6% or \$88,296,100. Grapes dropped from the number one crop in the county to the number two crop. The total grape value dropped 26.7% or \$102,629,000. Raisins reflected the most significant reduction in total value due to the substantially lower price. Marketable raisins were, however, up 106,000 tons or 61.3% over 1982. The increased production reflects no significant quantities of rain-damaged raisins and additional acreage diverted from wine to raisins. Raisins decreased in total value 28.7% or \$64,475,000. Nectarines increased in total value 25.0% or \$11,212,000. This income reflects increased yield, acreage and price. Peaches increased 37.2% or \$14,054,000 due to increased acreage and production of freestone varieties. Yield per acre increased 27.0%. Plums decreased 9.7% in total value or \$6,091,000 based mostly on price reduction of 24.2%.

**NURSERY PRODUCTS:** Gross value decreased 2.3% or \$120,000. Herbaceous ornamentals decreased in total value 29.8% or \$305,000 which reflects a 23.8% acreage reduction.

**LIVESTOCK AND POULTRY:** Gross value decreased 8.9% or \$22,359,000. Cattle and calves decreased 11.8% or \$17,623,000 in total value reflecting reduced numbers of head slaughtered from feedlots.

LIVESTOCK AND POULTRY PRODUCTS: Gross value decreased 6.7% or \$7,942,000. Milk decreased in total value 6.9% or \$7,326,000 reflecting reduced price.

APIARY: Gross value decreased 13.7% or \$895,900. Pollination decreased in total value 14% or \$771,300 reflecting reduced price for pollination services. Honey decreased in total value 11.4% or \$114,000.

TIMBER: Gross value decreased 35.7% or \$1,896,000.

FRESNO COUNTY'S 10 LEADING CROPS

<u>Crop</u>	1983 <u>Rank</u>	1983 <u>Dollar Value</u>	1982 <u>Rank</u>	1981 <u>Rank</u>	1973 <u>Rank</u>
Cotton	1	319,015,000	2	1	2
Grapes	2	282,211,000	1	2	1
Cattle & Calves	3	131,434,000	3	3	3
Tomatoes	4	115,705,000	4	6	7
Milk	5	99,293,000	5	4	5
Alfalfa Hay	6	65,620,000	9	11	6
Oranges	7	57,881,000	8	8	21
Plums	8	57,063,000	7	5	8
Nectarines	9	56,120,000	10	7	13
Head Lettuce	10	54,830,000	14	16	25



# FIELD CROPS



CROP	YEAR	HARVESTED ACREAGE	PRODUCTION		UNIT	VALUE	
			PER ACRE	TOTAL		PER UNIT	TOTAL
Barley	1983	62,000	1.82	113,000	ton	\$120.00	\$13,560,000
	1982	75,000	1.96	147,000	ton	119.00	17,493,000
Beans, dry	1983	11,100	.94	10,400	ton	662.00	6,885,000
	1982	13,500	.77	10,400	ton	522.00	5,429,000
Corn	1983	4,000	2.74	11,000	ton	145.00	1,595,000
	1982	6,400	2.80	17,900	ton	118.00	2,112,000
Cotton Lint	1983	323,000	1,074 <sup>a</sup>	701,000 <sup>b</sup>	bale	.77 <sup>c</sup>	269,885,000
	1982	410,000	1,129 <sup>a</sup>	935,000 <sup>b</sup>	bale	.65 <sup>c</sup>	303,875,000
Cotton Seed	1983			289,000	ton	170.00	49,130,000
	1982			433,000	ton	101.00	43,733,000
Hay							
Alfalfa <sup>d</sup>	1983	85,000	8.00	680,000	ton	96.50	65,620,000
	1982	85,000	7.70	654,000	ton	89.00	58,206,000
Other <sup>e</sup>	1983	39,500	1.27	50,100	ton	72.00	3,607,000
	1982	41,500	1.01	41,900	ton	84.00	3,520,000
Pasture and Range							
Alfalfa stubble <sup>f</sup>	1983	70,000			acre	12.00	840,000
	1982	70,000			acre	12.00	840,000
Irrigated Pasture	1983	50,000			acre	110.00	5,500,000
	1982	50,000			acre	110.00	5,500,000
Grazing Range	1983	900,000			acre	7.00	6,300,000
	1982	935,800			acre	7.00	6,551,000
Rice	1983	5,000	2.85	14,200	ton	249.00	3,536,000
	1982	8,300	3.15	26,100	ton	175.00	4,568,000
Safflower	1983	11,600	1.86	21,600	ton	250.00	5,400,000
	1982	9,600	1.44	13,800	ton	300.00	4,140,000
Silage							
Corn	1983	12,000	24.80	298,000	ton	21.00	6,258,000
	1982	12,000	24.00	288,000	ton	20.00	5,760,000

FIELD CROPS: (continued)

CROP	YEAR	HARVESTED ACREAGE	PRODUCTION		UNIT	VALUE	
			PER ACRE	TOTAL		PER UNIT	TOTAL
Sorghum Grain	1983	2,500	2.18	5,450	ton	\$112.00	\$ 610,000
	1982	3,500	2.10	7,350	ton	95.00	698,000
Sugar Beets	1983	15,708	26.44	415,000	ton	37.40	15,521,000
	1982	18,134	30.27	549,000	ton	28.00	15,372,000
Wheat	1983	71,000	2.37	168,000	ton	133.00	22,344,000
	1982	92,500	2.34	216,000	ton	132.00	28,512,000
Other <sup>g</sup>	1983	12,930					4,462,000
	1982	11,458					4,256,000
Total	1983	1,605,338					\$481,053,000
	1982	1,772,692					\$510,565,000

a Pounds of lint per acre

b 495 pounds net weight

c Price per pound, 500 pound bales

d Includes bales, cubes, and green chop

e Includes hay from barley, oats, seed alfalfa, and wheat

f Not included in total acreage figures; includes acreage from alfalfa hay and seed alfalfa

g Includes oats, screenings, straw, and winter forage



# SEED CROPS



CROP	YEAR	HARVESTED ACREAGE	PRODUCTION		UNIT	VALUE	
			PER ACRE	TOTAL		PER UNIT	TOTAL
Alfalfa Certified	1983	21,600	630	13,608,000	lb.	\$1.08	\$14,697,000
	1982	29,000	600	17,400,000	lb.	1.10	19,140,000
Alfalfa Non-Certified	1983	21,400	630	13,482,000	lb.	1.00	13,482,000
	1982	26,000	600	15,600,000	lb.	1.00	15,600,000
Total All Alfalfa Seed	1983	43,000		27,090,000	lb.		28,179,000
	1982	55,000		33,000,000	lb.		34,740,000
Barley Certified	1983	2,300	4,400	10,120,000	lb.	.067	678,000
	1982	2,200	3,900	8,580,000	lb.	.080	686,000
Barley Non-Certified	1983	900	3,630	3,267,000	lb.	.060	196,000
	1982	900	3,500	3,150,000	lb.	.060	189,000
Cotton <sup>a</sup>	1983	6,400		5,728,000	lb.	.090	608,000 <sup>b</sup>
	1982	7,800		6,952,000	lb.	.060	541,000 <sup>b</sup>
Vegetable <sup>c</sup>	1983	1,466					2,592,000
	1982	850					1,268,000
Other <sup>d</sup>	1983	20,105					8,008,000
	1982	<u>6,480</u>					<u>2,996,000</u>
Total	1983	67,771					\$40,261,000
	1982	65,430					\$40,420,000

a Not included in total acreage for "Seed Crops"

b Includes \$17 per acre approval on 5435 acres

c Carrot, eggplant, lettuce, pepper, radish, and tomato

d Non-certified beans, certified and non-certified blackeye cowpeas, certified and non-certified lima beans, certified and non-certified oats, certified rice, certified and non-certified peas, non-certified safflower, certified and non-certified wheat





# VEGETABLE CROPS



CROP	YEAR	HARVESTED ACREAGE	PRODUCTION		UNIT	VALUE	
			PER ACRE	TOTAL		PER UNIT	TOTAL
Broccoli <sup>a</sup>	1983	560	6.8	3,810	ton	\$431	\$ 1,642,000
	1982	404	4.1	1,660	ton	267	443,000
Chinese Vegetables <sup>b</sup>	1983	716	11.0	7,880	ton	356	2,805,000
	1982	641	14.0	8,970	ton	219	1,964,000
Eggplant	1983	230	9.5	2,180	ton	375	818,000
	1982	185	9.0	1,660	ton	413	686,000
Garlic <sup>a</sup>	1983	11,930	7.4	88,300	ton	261	23,046,000
	1982	8,340	6.9	57,500	ton	330	18,975,000
Head Lettuce							
Spring Naked Wrapped Bulk	1983	5,267	19.3	77,000	ton		
				18,700	ton		
				6,000	ton		
Season Total	1983	5,267	19.3	101,700	ton	278	28,273,000
	1982	4,203	16.7	70,190	ton	201	14,108,000
Fall Naked Wrapped Bulk	1983	5,387	18.5	76,500	ton		
				17,700	ton		
				5,640	ton		
Season Total	1983	5,387	18.5	99,840	ton	266	26,557,000
	1982	3,518	18.7	65,780	ton	274	18,024,000
Melons							
Cantaloupes	1983	23,000	9.8	225,000	ton	207	46,575,000
	1982	29,900	10.3	308,000	ton	209	64,372,000
Cranshaw	1983	161	8.9	1,430	ton	338	483,000
	1982	200	8.4	1,680	ton	258	433,000
Honeydew	1983	1,660	10.9	18,100	ton	266	4,815,000
	1982	1,150	7.8	8,970	ton	271	2,431,000

VEGETABLES CROPS: (continued)

CROP	YEAR	HARVESTED ACREAGE	PRODUCTION		UNIT	VALUE	
			PER ACRE	TOTAL		PER UNIT	TOTAL
Onions							
Dry							
Fresh	1983	1,858	12.0	22,300	ton	\$214	\$4,772,000
	1982	1,825	14.0	25,600	ton	184	4,710,000
Processed	1983	8,100	19.0	154,000	ton	72	11,088,000
	1982	9,000	22.0	198,000	ton	71	14,058,000
Green	1983	240	10.2	2,500	ton	658	1,645,000
	1982	214	11.3	2,420	ton	547	1,324,000
Peppers							
Bell	1983	753	7.3	5,500	ton	432	2,376,000
	1982	930	4.7	4,370	ton	525	2,294,000
Chili, fresh	1983	300	3.3	990	ton	800	792,000
	1982	470	3.3	1,550	ton	893	1,384,000
Radishes	1983	101	4.8	485	ton	406	197,000
	1982	109	6.1	665	ton	320	213,000
Squash							
Summer	1983	315	7.0	2,205	ton	297	655,000
	1982	451	9.0	4,060	ton	290	1,177,000
Winter	1983	157	4.9	769	ton	295	227,000
	1982	307	5.6	1,720	ton	278	478,000
Sweet Potatoes/ Yams	1983	855	11.0	9,405	ton	424	3,988,000
	1982	1050	9.4	9,870	ton	336	3,316,000
Tomatoes							
Fresh							
Cherry	1983	1,156	7.5	8,670	ton	576	4,994,000
	1982	552	7.5	4,140	ton	642	2,658,000
Regular	1983	3,050	13.7	41,800	ton	340	14,212,000
	1982	2,000	10.6	21,200	ton	360	7,632,000
Processed	1983	60,500	29.7	1,797,000	ton	53.70	96,449,000
	1982	54,370	31.9	1,734,000	ton	55.60	96,410,000

VEGETABLE CROPS: (continued)

CROP	YEAR	HARVESTED ACREAGE	PRODUCTION		UNIT	VALUE	
			PER ACRE	TOTAL		PER UNIT	TOTAL
Other Vegetables <sup>c</sup>	1983	8,276					\$ 14,439,000
	1982	<u>6,056</u>					<u>9,042,000</u>
Total	1983	134,572					\$290,897,000
	1982	127,875					\$268,132,000

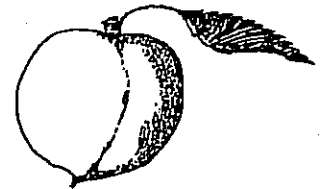
a Includes fresh and processed

b Includes bitter melon, bok choy, daikon, dunqua, gai choy, gai lon, lo bok, long beans, moqua, napa and sinqua

c Includes alfalfa sprouts, asparagus, bean sprouts, beets, cabbage, carrots, cauliflower, chile peppers (processed), cucumber (hot house, lemon, and regular), eggplant (Japanese), endive, greens (beets, collard, mustard, and turnip), kale, kohlrabi, leeks, lima beans, melons (canary, casaba, honeyball, Persian, Santa Claus, and watermelon), mushrooms, okra, parsley, peas, pumpkins, red chard, snap beans, sugar cane, sugar peas, sunchoke, sweet corn, Swiss chard, taro root, turnips



## FRUIT & NUT CROPS



CROP	YEAR	BEARING ACREAGE	PRODUCTION		UNIT	VALUE	
			PER ACRE	TOTAL		PER UNIT	TOTAL
Almonds	1983	24,301	.48	11,700	ton	\$2,300	\$ 26,910,000
	1982	23,642	.69	16,300	ton	1,800	29,340,000
Almond Hulls	1983			19,400	ton	80	1,552,000
	1982			27,000	ton	60	1,620,000
Apricots	1983	285	6.60	1,880	ton	763	1,434,000
	1982	243	6.20	1,510	ton	980	1,480,000
Avocados	1983	360	1.57	565	ton	520	294,000
	1982	333	3.38	1,130	ton	732	827,000
Boysenberries	1983	245	2.49	610	ton	790	482,000
	1982	304	2.95	897	ton	662	594,000

FRUIT AND NUT CROPS: (continued)

CROP	YEAR	BEARING ACREAGE	PRODUCTION		UNIT	VALUE		
			PER ACRE	TOTAL		PER UNIT	TOTAL	
<b>Citrus</b>								
Lemons	1983	1,010	13.88					
	1982	1,004	11.30					
Fresh	1983			7,580	ton	\$380	\$ 2,880,000	
	1982			5,660	ton	374	2,117,000	
Processed	1983			6,440	ton	17	109,000	
	1982			5,680	ton	47	267,000	
<b>Oranges</b>								
Navel	1983	16,092	14.05					
	1982	15,876	10.33					
Fresh	1983			153,000	ton	289	44,217,000	
	1982			128,000	ton	346	44,288,000	
Processed	1983			73,100	ton	22	1,608,000	
	1982			36,000	ton	38	1,368,000	
Valencia	1983	3,391	18.22					
	1982	3,389	9.32					
Fresh	1983			32,400	ton	330	10,692,000	
	1982			26,300	ton	526	13,834,000	
Processed	1983			29,400	ton	62	1,823,000	
	1982			5,300	ton	63	334,000	
Other <sup>a</sup>	1983	525	10.15					
	1982	695	8.63					
Fresh	1983			4,030	ton	353	1,423,000	
	1982			4,500	ton	351	1,580,000	
Processed	1983			1,300	ton	18	23,400	
	1982			1,500	ton	21	31,500	
Figs, dried	1983	6,310	.63	3,970	ton	908	3,605,000	
	1982	6,427	.78	4,050	ton	1,056	4,277,000	
<b>Grapes</b>								
Raisin Varieties	1983	158,993	9.01					
	1982	154,184	11.17					
Canned	1983			1,100	ton	180	198,000	
	1982			3,800	ton	224	851,000	

FRUIT AND NUT CROPS: (continued)

CROP	YEAR	BEARING ACREAGE	PRODUCTION		UNIT	VALUE	
			PER ACRE	TOTAL		PER UNIT	TOTAL
Grapes (continued)							
Crushed	1983			113,000	ton	\$107	\$ 12,091,000
	1982			270,000	ton	121	32,670,000
Dried	1983			279,000	ton	575	160,425,000
	1982			173,000	ton	1,300	224,900,000
Fresh	1983			59,400	ton	643	38,194,000
	1982			58,300	ton	695	40,518,000
Juice	1983			9,400	ton	360	3,384,000
	1982			8,860	ton	385	3,411,000
Table Varieties	1983	6,677	7.01				
	1982	6,096	8.18				
Crushed	1983			18,800	ton	100	1,880,000
	1982			18,200	ton	95	1,729,000
Fresh	1983			28,000	ton	704	19,712,000
	1982			31,600	ton	794	25,090,000
Wine Varieties	1983	32,885	8.80				
	1982	31,691	11.19				
Crushed	1983			268,000	ton	141	37,788,000
	1982			337,000	ton	141	47,517,000
Juice	1983			21,400	ton	399	8,539,000
	1982			17,600	ton	379	6,670,000
Grapes Total	1983	198,555					282,211,000
	1982	191,971					384,840,000
Nectarines	1983	12,174	9.45	115,000	ton	488	56,120,000
	1982	11,615	8.88	103,000	ton	436	44,908,000
Olives, canned	1983	1,464	1.35	1,980	ton	453	897,000
	1982	1,406	4.33	6,090	ton	486	2,960,000

FRUIT AND NUT CROPS: (continued)

CROP	YEAR	BEARING ACREAGE	PRODUCTION		UNIT	VALUE	
			PER ACRE	TOTAL		PER UNIT	TOTAL
Peaches							
Clingstone	1983	1,559	14.60	22,800	ton	\$180	\$ 4,104,000
	1982	1,489	18.55	27,600	ton	166	4,582,000
Freestone	1983	9,659	10.30				
	1982	9,157	8.11				
Fresh	1983			96,200	ton	493	47,427,000
	1982			69,700	ton	468	32,620,000
Processed	1983			3,300	ton	95	314,000
	1982			4,600	ton	128	589,000
Peaches Total	1983	11,218					51,845,000
	1982	10,646					37,791,000
Pears and Apple Pears	1983	168	6.25	1,050	ton	1,120	1,176,000
	1982	164	4.95	812	ton	1,199	974,000
Pecans	1983	250	.57	143	ton	2,100	300,000
	1982	260	1.00	260	ton	2,400	624,000
Persimmons	1983	62	8.23	510	ton	1,171	597,000
	1982	55	7.05	388	ton	955	371,000
Pistachio Nuts	1983	272	.40	108	ton	3,000	324,000
	1982	272	.93	253	ton	3,000	759,000
Plums	1983	14,041	5.89	82,700	ton	690	57,063,000
	1982	13,523	5.13	69,400	ton	910	63,154,000
Pomegranates	1983	899	4.19	3,770	ton	602	2,269,000
	1982	983	3.92	3,850	ton	711	2,737,000
Prunes, dried	1983	495	3.73	1,850	ton	679	1,256,000
	1982	475	3.63	1,720	ton	672	1,156,000
Strawberries	1983	218	15.60	3,400	ton	763	2,594,000
	1982	75	11.00	825	ton	954	787,000
Walnuts	1983	3,351	1.40	4,690	ton	668	3,133,000
	1982	3,368	1.30	4,380	ton	1,128	4,941,000
Other <sup>b</sup>	1983	1,052					5,279,000
	1982	429					3,937,000*
Total	1983	296,738					\$562,116,400
	1982	287,155					\$650,412,500

FRUIT AND NUT CROPS: (continued)

- a Includes mandarin/tangerines, and tangelos
- b Includes apples, processed apricots, fresh figs, substandard figs, processed nectarines, ollalieberries, kiwi, olive oil, fresh olives, and quince
- \* Revised



## NURSERY PRODUCTS



ITEM	YEAR	PRODUCTION AREA ACRES	QUANTITY SOLD BY PRODUCERS	UNIT	VALUE
Herbaceous Ornamentals <sup>a</sup>	1983	16	490,000	b	\$ 717,000
	1982	21	1,056,000	b	1,022,000
Ornamentals Trees and Shrubs <sup>c</sup>	1983	96	816,000	plants	1,653,000
	1982	105	260,000	plants	1,223,000
Other Nursery crops <sup>d</sup>	1983	21			2,875,000
	1982	105			3,115,000
Total	1983	133			\$5,240,000
	1982	231			\$5,360,000

- a Includes cut flowers and cut greens, potted plants, bedding plants and herbaceous perennials
- b Includes flats, dozens, cans, and single plants
- c Includes Christmas trees
- d Includes grape rootings and vegetable plants



## LIVESTOCK & POULTRY



ITEM	YEAR	PRODUCTION		UNIT	VALUE	
		NO. OF HEAD	TOTAL LIVWEIGHT		PER UNIT	TOTAL
Cattle and Calves						
Beef						
Breeding Stock						
Common	1983	1,840		head	\$500.00	\$ 920,000
	1982	1,980		head	525.00	1,040,000
Registered	1983	460		head	1,200.00	552,000
	1982	495		head	880.00	436,000
Feeders	1983	148,000	296,000	cwt.	59.80	17,701,000
	1982	146,000	292,000	cwt.	61.30	17,900,000
Calves	1983	31,400	144,000	cwt.	57.10	8,222,000
	1982	35,000	161,000	cwt.	56.10	9,032,000
Slaughter Stock						
From Feed Lots	1983	260,000	1,222,000 <sup>a</sup>	cwt.	59.80	73,076,000
	1982	296,000	1,391,000 <sup>a</sup>	cwt.	61.30	85,268,000
From other sources	1983	6,900	60,700	cwt.	39.30	2,386,000
	1982	9,900	87,100	cwt.	39.80	3,467,000
Dairy						
Breeding Stock	1983	9,700		head	1,210.00	11,737,000
	1982	11,000		head	1,260.00	13,860,000
Cull Stock	1983	17,100	254,000	cwt.	34.60	8,788,000
	1982	16,800	249,000	cwt.	43.00	10,707,000
Calves	1983	46,100	115,000	cwt.	70.00	8,050,000
	1982	45,300	113,000	cwt.	65.00	7,345,000
Sheep and Lambs						
Slaughter Stock						
Lambs	1983	59,500	56,500	cwt.	56.40	3,187,000
	1982	76,000	72,200	cwt.	55.80	4,029,000
Sheep	1983	11,600	16,200	cwt.	17.90	290,000
	1982	15,000	21,000	cwt.	18.60	391,000



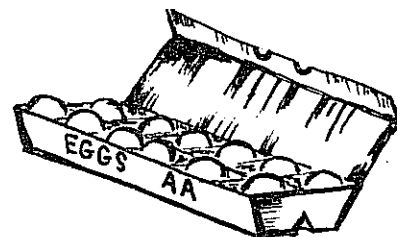
LIVESTOCK & POULTRY: (continued)

ITEM	YEAR	PRODUCTION		UNIT	VALUE	
		NO. OF HEAD	TOTAL LIVWEIGHT		PER UNIT	TOTAL
<b>Hogs and Pigs</b>						
Feeder Pigs and Slaughter Stock	1983	11,300	23,700	cwt.	\$51.30	\$ 1,216,000
	1982	11,900	25,000	cwt.	58.20	1,455,000
<b>Horses and Mules</b>						
Recreational and Working Stock	1983	3,000		head	1,100.00	3,300,000
	1982	2,250		head	1,350.00	3,038,000
Other <sup>b</sup>	1983					89,288,000
	1982					<u>93,104,000*</u>
Total	1983					\$228,713,000
	1982					\$251,072,000

- a Net feedlot gain
- b Includes chickens, ducks, fish, geese, pheasants, rabbits, squab, and turkeys
- \* Revised



## LIVESTOCK & POULTRY PRODUCTS



CROP	YEAR	PRODUCTION	UNIT	VALUE	
				PER UNIT	TOTAL
Manure	1983	433,000	ton	\$8.00	\$ 3,464,000
	1982	456,000	ton	8.33	3,798,000
<b>Milk</b>					
Manufacturing	1983	65,000	cwt.	12.13	788,000
	1982	38,000	cwt.	12.42	472,000
Market	1983	7,642,000	cwt.	12.89	98,505,000
	1982	8,109,000	cwt.	13.09	106,147,000
Wool	1983	524,000	lb.	.70	367,000
	1982	554,000	lb.	.84	465,000

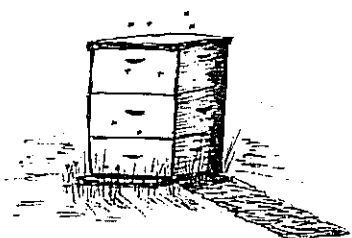
LIVESTOCK & POULTRY PRODUCTS: (continued)

CROP	YEAR	PRODUCTION	UNIT	VALUE	
				PER UNIT	TOTAL
<b>Eggs</b>					
Chicken & Turkey <sup>a</sup>	1983	5,057,000	dozen	\$1.356	\$6,857,000
	1982	5,872,000	dozen	1.199	7,041,000
Total	1983				\$109,981,000
	1982				\$117,923,000

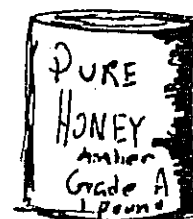
a Includes market eggs and hatching eggs

JANUARY 1 INVENTORIES OF LIVESTOCK AND POULTRY (In Number of Head)

ITEM	January 1, 1984	January 1, 1983
<b>Cattle and Calves</b>		
All	367,000	360,000
Dairy and Beef Cows	96,000	100,000
Cattle on Feed	80,000	104,000
Stock Sheep and Lambs	90,000	95,000
Goats	700	700
Hogs and Pigs	6,400	6,500
Horses	20,000	20,000
Poultry	1,153,842	390,000



## APIARY PRODUCTS and POLLINATION SERVICES

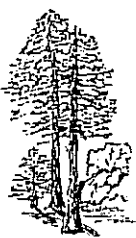


ITEM	YEAR	PRODUCTION TOTAL	UNIT	VALUE	
				PER UNIT	TOTAL
<b>Apiary Product<sup>a</sup></b>					
Honey	1983	1,526,000	1b.	\$ .58	\$ 885,000
	1982	1,753,000	1b.	.57	999,000
Beeswax	1983	31,400	1b.	1.15	36,100
	1982	30,900	1b.	1.51	46,700

APIARY: (continued)

ITEM	YEAR	PRODUCTION TOTAL	UNIT	VALUE	
				PER UNIT	TOTAL
Pollination <sup>b</sup>					
Seed Crops					
Alfalfa	1983	126,000	colony	\$18.90	\$2,381,000
	1982	151,000	colony	19.90	3,005,000
Other <sup>c</sup>	1983	813	colony	18.50	15,000
	1982	272	colony	19.50	5,300
Tree Fruit <sup>d</sup>	1983	90,000	colony	21.40	1,926,000
	1982	84,000	colony	21.58	1,813,000
Cantaloupes	1983	25,800	colony	15.50	400,000
	1982	36,200	colony	18.50	670,000
Total	1983				\$5,643,100
	1982				\$6,539,000

- a Reflects only the bees registered in Fresno County by commercial and semi-commercial beekeepers: 1983 - 35,635 colonies; 1982 - 30,015 colonies
- b Reflects value of pollination by all bee colonies located in Fresno County for pollination services during 1983. Estimated total colonies: 151,997
- c Cucumbers, onion seed, carrot seed, vegetable seed, and other truck crops
- d Almonds and plums



## TIMBER HARVEST



CROP	YEAR	PRODUCTION	UNIT (a)	VALUE (b)
Timber	1983	60,156,000	Board feet	\$3,414,000
	1982	56,774,000	Board feet	\$5,310,000

- a Board feet is the quantity of timber cut and sealed
- b Value of timber immediately before cutting

GROWTH OF FRESNO COUNTY AGRICULTURE AS INDICATED BY GROSS VALUE  
OF AGRICULTURAL PRODUCTS OVER A SPAN OF TWENTY-ONE YEARS

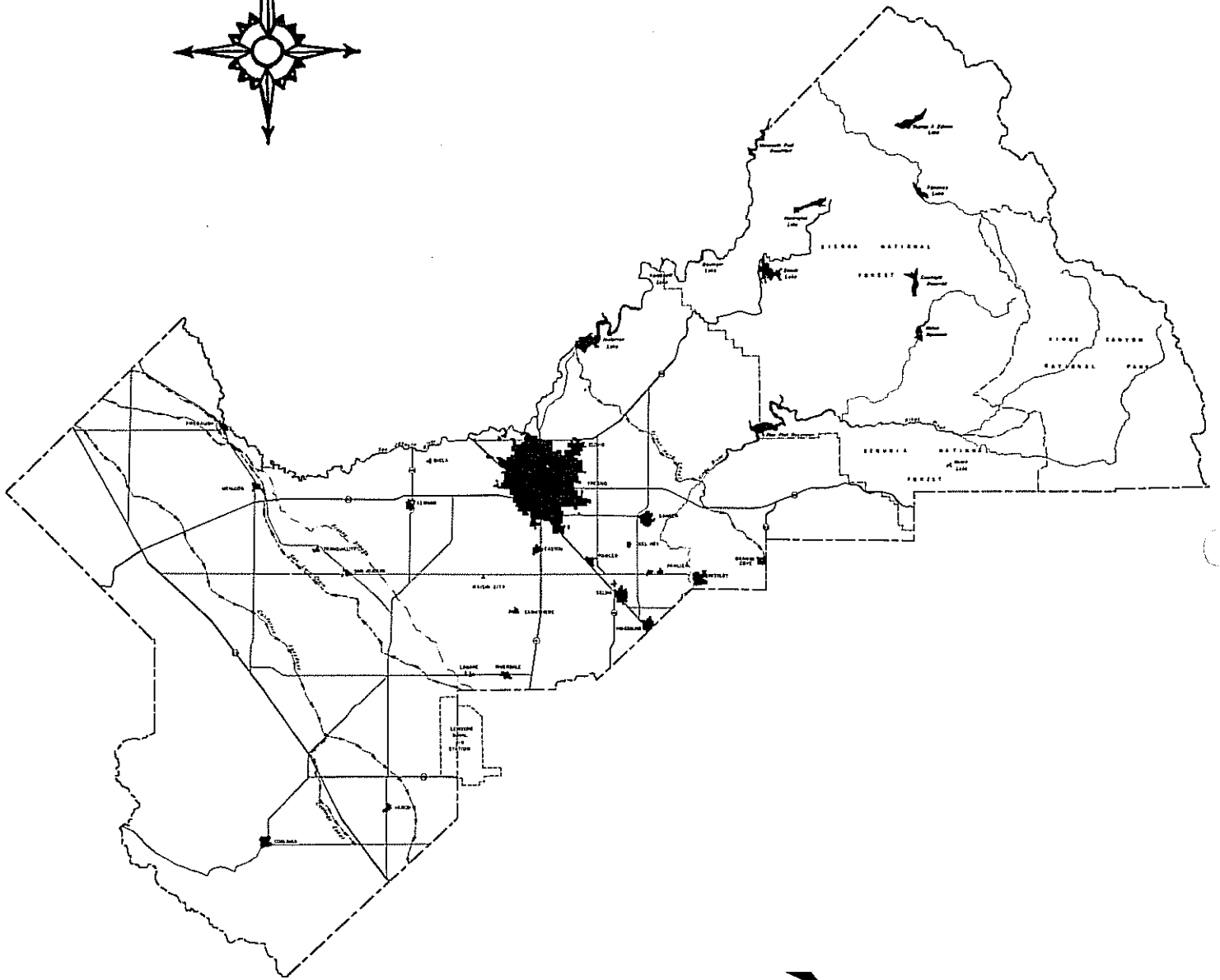
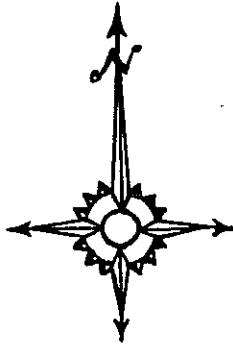
1963 -	\$423,206,000	1974 -	967,350,000
1964 -	443,088,000	1975 -	1,026,356,000*
1965 -	438,253,000	1976 -	1,178,373,000*
1966 -	452,926,000	1977 -	1,110,424,200*
1967 -	438,753,000*	1978 -	1,241,033,100*
1968 -	462,659,000	1979 -	1,719,235,500
1969 -	458,014,000	1980 -	2,002,448,900*
1970 -	474,706,000*	1981 -	1,905,289,240*
1971 -	507,930,000	1982 -	1,855,733,500
1972 -	559,307,000*	1983 -	1,727,319,500
1973 -	828,682,000*		

SIX YEAR COMPARISON STUDY OF GROSS CROP VALUES IN FRESNO COUNTY

	1963	1973	1980	1981	1982	1983
Field Crops	\$180,576,000	\$248,562,000	\$635,717,000	\$580,238,000	\$510,565,000	\$481,053,000
Seed Crops	9,178,000	15,708,000*	43,629,000	46,716,000	40,420,000	40,261,000
Vegetable Crops	24,896,000	73,012,000	186,702,000*	186,262,000	268,132,000	290,898,000
Fruit and Nut Crops	131,871,000	326,235,000	752,466,400	679,717,300*	650,412,500	562,116,400
Nursery Products	512,000	2,245,000	3,929,000	5,675,000	5,360,000	5,240,000
Livestock and Poultry	75,845,000	161,747,000	374,215,900	396,568,000	368,995,000	338,694,000
Apiary	328,000	1,173,000	5,789,600	5,412,940	6,539,000	5,643,100
Timber Harvest						
Grand Total	\$423,206,000	\$828,682,000	\$2,002,448,900*	\$1,905,289,240*	\$1,855,733,500	\$1,727,319,500
			+	4,700,000	5,310,000	3,414,000

\*Revised

+Not reported



FREEWAY - (EXISTING & PLANNED)  
MAJOR HIGHWAY - (EXISTING & PLANNED)  
URBAN AREA  
LAKE OR RESERVOIR  
NATIONAL FOREST OR PARK BOUNDARY  
MAJOR CANALS  
SAN JOAQUIN DRAIN

