

# Photovoltaic Solar & Energy Storage Projects Submitted to Fresno County

## Projects with Land Use Entitlement Applications In Process - Not Approved

Rec. Date	Applicant	Application	APN	Address	Zoning	Acreage	Use	Staff	CUP	IS/EIR	MW	Ag. Contract	Status / Action	Information
7/21/2022	Malaga BESS, LLC	CUP 3748	330-05027SU	2611 E. North Ave.	M-3	19	Battery Energy Storage	JS	3748	IS 8274	96 MW Storage	n/a	In Process	Call 559-600-4052 for information
3/3/2022	H2B2 USA LLC	CUP 3738	015-100-20S	24387 W. Whitesbridge	AE-20	60	Solar Farm	JS	3738	8210	Hydrogen Storage	n/a	In Process	Call 559-600-4052 for information
1/21/2022	Key Energy Storage	CUP 3734	085-040-58S, 36S, 37S	n/a	AE-40	208	Energy Storage Facility	JS	3734	8189	3 GW Storage	2068	In Process	Call 559-600-4230 for information
5/20/2020	Sonrisa Solar	CUP 3677	028-071-17ST	n/a	AE-20	1700	Solar Farm & Energy Storage	JS	3677	7869	200/60 MW Storage	n/a	In Process	Call 559-600-4230 for information
12/7/2018	Heartland Solar	CUP 3630/3631	028-160-20ST, etal	W of Derrick Ave btwn W Lincoln Ave & W Manning Ave	AE-20	1116	Solar Farm & Hydrogen Production	JS	3630	7564	30	n/a	In Process	Call 559-600-4230 for information
6/2/2023	Renewable Properties, LLC	CUP 3764	004-120-02	10735 N Russell Ave.	AE-20 & AC	56.7	Solar Facility	ER	3764	8403	23,400 MW/year	n/a	In Process	Call 559-600-4245 for information
10/30/2023	BayWa r.e. / Cornucopia Hybrid Solar Project	CUP 3777	090-030-06S, 090-030-04S, 090-030-03, 090-040-01, 085-110-23S, 085-110-13S	Intersection of SR 33 (Lost Hills Road) and Sutter Avenue	AE-20	1613	Hybrid Solar and Battery Energy Storage	JS	3777	8511	300MW	3212, 982, 1993, 2385, 2357, 3217, & 1995	In Process	Call 559-600-4230 for information

## Projects with Approved Land Use Entitlements - but no construction permits issued

Rec. Date	Applicant	Application	APN	Address	Zoning	Acreage	Use	Staff	CUP	IS/EIR	MW	Ag. Contract	Status / Action	Information
3/30/2022	CES Electron Farm one	CUP 3742	027-121-15S	West side of S Fairfax Ave.	AE-20	40	Solar Farm	ER	3742	8230	4.4	n/a	Board of Supervisors <b>Approved</b> 08/08/23	Call 559-600-4052 for information
3/16/2020	Luna Valley Solar	CUP 3671	028-060-34T, etal	n/a	AE-20	1252	Solar Farm & Energy Storage	JS	3671	7813	200 MW Storage	n/a	Planning Commission <b>Approved</b> 11/18/21	Call 559-600-4230 for information

## Projects with Building Permits and Under Construction - but not completed

Rec. Date	Applicant	Application	APN	Address	Zoning	Acreage	Use	Staff	CUP	IS/EIR	MW	Ag. Contract	Status / Action	Information
11/9/2016	Scarlet Solar	CUP 3555	028-111-04ST, etal	n/a	AE-20	4069	Solar Farm & Energy Storage	EA	3555	7230	400 MW Storage	n/a	Planning Commission <b>Approved</b> 9/9/21	Call 559-600-4230 for information
12/30/2016	5th Standard Solar	CUP 3562-64	075-060-15S, etal	n/a	AE-20	1400	Solar Farm & Energy Storage	DR	3562-64	7257	170/100M W Storage	365	Planning Commission <b>Approved</b> 10/22/20	Call 559-600-4230 for information

## COMPLETED OR CLOSED - Photovoltaic Solar Projects Submitted to Fresno County

Rec. Date	Applicant	Application	APN	Address	Zoning	Acreage	Use	Staff	CUP	IS/EIR	MW	Ag. Contract	Status / Action	Information
2/24/2022	GS Solar North	CUP 3737	011-05-09, etal	n/a	AE-20	6368	Solar Farm	EA	3737	8205	950	n/a	<b>Closed</b> due to inactivity	Call 559-600-4230 for information
9/30/2021	ForeFront Power	CUP 3610 Ext. 2	070-070-62S	W of S San Mateo Av btwn Phelps Av & Gale Av	AE-20	53.81	Solar Farm	ER	3610	8143	1	n/a	Planning Commission <b>Approved</b> 12/16/2021	Call 559-600-4230 for information
1/25/2021	San Luis Solar	CUP 3695	078-130-23S, etal	n/a	AE-20	775	Solar Farm	TK	3695	7997	125/30 MW Storage	2265	<b>Closed</b> due to inactivity	Call 559-600-4052 for information
3/16/2018	ForeFront Power	CUP 3611	358-021-74	9375 McCall Avenue	AE-20	20	Solar Farm	EJ	3611	7444		n/a	Planning Commission <b>Denied</b> 6/28/18	Call 559-600-4230 for information
1/25/2018	ForeFront Power	CUP 3609	073-060-12	N of Jayne Av btwn Hwy 33 & S. El Dorado Av	AL-20	79.7	Solar Farm	DTC	3609	7441	5	n/a	Planning Commission <b>Approved</b> 10/25/18	Call 559-600-4230 for information

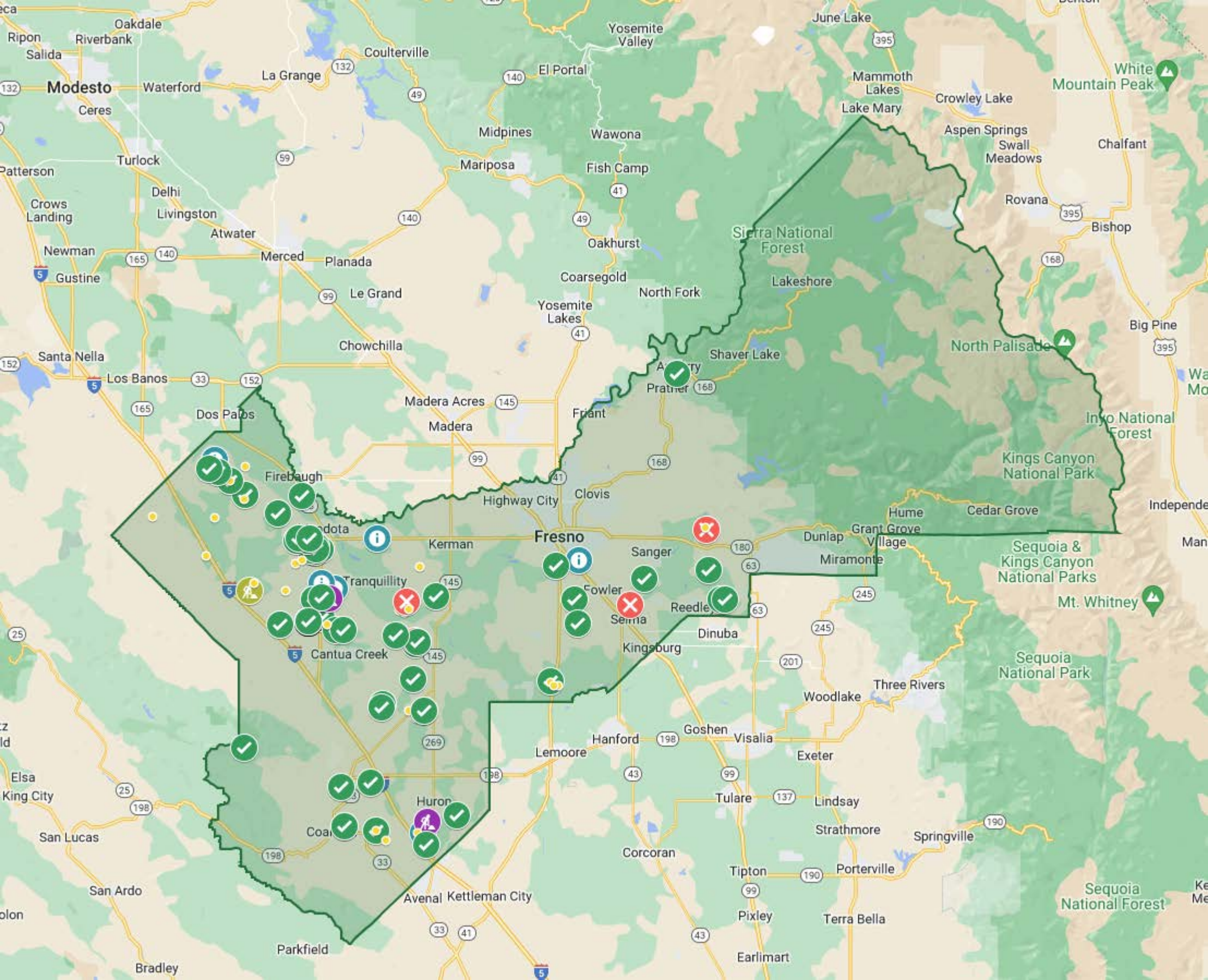
1/25/2018	ForeFront Power	CUP 3610	070-070-62S	W of S San Mateo Av btwn Phelps Av & Gale Av	AE-20	53.81	Solar Farm	EJ	3610	7442	1	n/a	Planning Commission Approved 10/11/18	Call 559-600-4230 for information
1/24/2018	ForeFront Power	CUP 3603	065-060-25S	0.7 mile South of Hwy 198; 1.6 miles West of Interstate 5	AE-40	40	Solar Farm	JS	3603	7428		n/a	Closed due to inactivity	Call 559-600-4230 for information
1/18/2018	ForeFront Power	CUP 3607	070-020-07	N of Palmer Ave btwn Hwy 33 & Oil City Rd	AE-20/AE-40	88.23	Solar Farm	DTC	3607	7439	5	n/a	PC Approved 7/18/19	Call 559-600-4230 for information
12/5/2017	Hudson Solar I LLC	CUP 3601	027-210-38S etal	NW of I-t btwn W Manning/S Brannan & S Fairfax	AE-40	836	Solar Farm	EJ	3601	7424		n/a	Closed due to non-submittal of required docs 12/17/19	Call 559-600-4230 for information
12/1/2017	Luna Valley Solar I, LLC	CUP 3598	028-060-34T etal	West of S. Derrick Avenue (Hwy 33) btwn W. Dinuba Avenue & W. South Avenue	AE-20	1252	Solar Farm	EJ	3598	7416		n/a	Closed - Developer Change	Call 559-600-4230 for information
10/11/2017	South Lake Solar	CUP 3596	060-042-03S,04S	West of South Lake Avenue btwn Jeffrey & Paige	AE-20	585	Solar Farm	EJ	3596	7398		n/a	Withdrawn 3/18/20	Call 559-600-4230 for information
7/5/2017	RE Tranquillity #2	CUP 3586	028-101-47ST etal	seven miles southwest of the community of Tranquillity	AE-20	500	Amend CUP 3452 (Solar Farm)	CMM	3586	EIR 7343	15	n/a	Planning Commission Approved 10/26/17	Call 559-600-4230 for information
7/5/2017	RE Tranquillity #3	CUP 3587	028-101-70ST etal	seven miles southwest of the community of Tranquillity	AE-20	200	Amend CUP 3453 (Solar Farm)	CMM	3587	EIR 7343	15	n/a	Planning Commission Approved 10/26/17	Call 559-600-4230 for information
4/5/2017	GASNA 6P	CUP 3578	040-080-15S	S of Kamm Ave betwn Butte Ave & Lake Ave	AE-20	318	Amend CUP 3291 (Solar Farm)	EJ	3578	6261	27	n/a	Planning Commission Approved 6/8/17	Call 559-600-4230 for information
12/30/2016	Little Bear Solar 6, LLC	CUP 3577	019-110-13ST	West California Avenue	AE-20	483	Solar Farm	CMM	3577	7225	20	n/a	BOS Approved 2/26/19	Call 559-600-4230 for information
10/21/2016	Little Bear Solar 1, LLC	CUP 3550	019-110-04ST	S of W California btwn San Bernardino & S Ohio	AE-20	157	Solar Farm	CMM	3550	7225	20	n/a	BOS Approved 2/26/19	Call 559-600-4230 for information
10/21/2016	Little Bear Solar 5, LLC	CUP 3551	019-110-05ST	S of W California btwn San Bernardino & S Ohio	AE-20	157	Solar Farm	CMM	3551	7225	20	n/a	BOS Approved 2/26/19	Call 559-600-4230 for information
10/21/2016	Little Bear Solar 3, LLC	CUP 3552	019-110-06ST	S of W California btwn San Bernardino & S Ohio	AE-20	157	Solar Farm	CMM	3552	7225	20	n/a	BOS Approved 2/26/19	Call 559-600-4230 for information
10/21/2016	Little Bear Solar 4, LLC	CUP 3553	019-110-03ST,13ST	S of W California btwn San Bernardino & S Ohio	AE-20	793	Solar Farm	CMM	3553	7225	20	n/a	BOS Approved 2/26/19	Call 559-600-4230 for information
5/10/2016	GASNA 6P LLC	CUP 3531	040-080-35S	S of W. Kamm btwn S. Yuba & S. Butte	AE-20	13.5	Solar Facility	EJ	3531	7146	27	No	BOS Approved 1/10/17	Call 559-600-4230 for information
10/22/2015	GASNA 30P	CUP 3519	055-250-04	499 W. Harlan Ave	AE-20	19.16	Solar Farm	EJ	3519	7054		No	Closed due to inactivity	Call 559-600-4230 for information
10/21/2015	Jess Melin/Whitney Point Solar, LLC	CUP 3518	060-042-16S,17S	E side S Lake Ave btwn Jeffrey & Paige (unincorporated Five Points area)	AE-20	5	Amend CUP 3295 (Solar Farm)	EJ	3518	7053	40	n/a	Planning Commission Approved 2/18/16	Call 559-600-4230 for information
10/5/2015	Citizen Solar B	CUP 3513	019-050-61ST	E side N San Diego Ave btwn Whitesbridge Ave & W. California Ave	AE-20	40	Amend CUP 3327 (Solar Farm)	DC	3513	PER 7044	65	Yes	Planning Commission Approved 4/14/16	Call 559-600-4230 for information
10/5/2015	Citizen Solar E	CUP 3514	019-050-61ST	E side N San Diego Ave btwn Whitesbridge Ave & W. California Ave	AE-20	40	Amend CUP 3327 (Solar Farm)	DC	3514	PER 7045	65	Yes	Planning Commission Approved 4/14/16	Call 559-600-4230 for information
10/5/2015	Citizen Solar F	CUP 3515	019-050-61ST	E side N San Diego Ave btwn Whitesbridge Ave & W. California Ave	AE-20	240	Amend CUP 3327 (Solar Farm)	DC	3515	PER 7046	65	Yes	Planning Commission Approved 4/14/16	Call 559-600-4230 for information
5/18/2015	Aspiration Solar G, LLC	CUP 3500	038-080-14ST	E of S. Oil City Av btwn W. Nebraska & W. Mountain	AE-20	120.82	Solar Farm	DB	3500	6978	9	n/a	Planning Commission Approved 10/22/15	Call 559-600-4230 for information
5/15/2015	Five Points Solar Park, LLC	CUP 3498	060-020-05S	S of Excelsior Av btwn Sonoma & Napa Av alignmnts	AE-20	N/A	CUP 3333 Solar Farm Amendment	DC	3498	6425	60		Planning Commission Approved 6/4/15	Call 559-600-4230 for information

4/23/2015	Little Bear Solar 1, LLC	CUP 3492	019-110-03ST-05ST	S of W. California btwn San Bernardino & S. Ohio	AE-20	630	Solar Facility	DC	3492	6962		n/a	Withdrawn 7/18/16	Call 559-600-4230 for information
4/23/2015	Little Bear Solar 2, LLC	CUP 3493	119-110-03ST	S of W. California btwn San Bernardino & S. Ohio	AE-20	631	Solar Facility	DC	3493	6962		n/a	Withdrawn 7/18/16	Call 559-600-4230 for information
4/23/2015	Little Bear Solar 3, LLC	CUP 3494	119-110-03ST	S of W. California btwn San Bernardino & S. Ohio	AE-20	632	Solar Facility	DC	3494	6962		n/a	Withdrawn 7/18/16	Call 559-600-4230 for information
4/23/2015	Little Bear Solar 4, LLC	CUP 3495	119-110-03ST	S of W. California btwn San Bernardino & S. Ohio	AE-20	633	Solar Facility	DC	3495	6962		n/a	Withdrawn 7/18/16	Call 559-600-4230 for information
4/23/2015	Little Bear Solar	CUP 3550-53 & 77	019-110-03ST	S of W. California btwn San Bernardino & S. Ohio	AE-20	630	Solar Facility	DR	3550-53 & 77	6962	20	n/a	Planning Commission Approved 12/6/2018	Call 559-600-4230 for information
8/19/2014	Pristine Sun LLC	CUP 3477	373-360-19	22694 E. Parlier Ave, Reedley	AE-20	19.5	Solar Facility	EVB	3477	6879	0.999	n/a	BOS Approved 8/11/15; Planning Commission Approved Ext 1 10/26/17; Planning Commission Approved Ext 2 10/11/18	Call 559-600-4230 for information
7/15/2014	GASNA 52P LLC	CUP 3472	030-100-41S, 033-020-41S, 48S, 49S, 52S	S. of W. Springfield btwn Colorado & Sutter, S of City of San Joaquin	AE-20	280	Solar Farm	DB	3472	6862		1507/1508/2032	Withdrawn 6/2/15	Call 559-600-4230 for information
5/29/2014	FPC Solar	CUP 3464	030-070-78,79	W. side Lassen approx. one mile N. of Manning	AE-20	49.53	Solar Farm	CM	3464	6844	7.5	n/a	Planning Commission Approved 9/18/14	Call 559-600-4230 for information
3/27/2014	Tranquility Solar	CUP 3451-58	028-101-47ST etal 500 ac	n/a	AE-20	3732	Solar Facility	DR	3451-58	6330	200 MW Storage	n/a	Planning Commission Approved 10/9/14	Call 559-600-4230 for information
3/27/2014	RE Tranquility #1	CUP 3451	028-101-48ST etal	seven miles southwest of the community of Tranquility	AE-20	600	Solar Facility	CM	3451	EIR 6330	200	n/a	Planning Commission Approved; EIR Certified 10/9/14	Call 559-600-4230 for information
3/27/2014	RE Tranquility #2	CUP 3452	028-101-47ST etal	seven miles southwest of the community of Tranquility	AE-20	500	Solar Facility	CM	3452	EIR 6330	15	n/a	Planning Commission Approved; EIR Certified 10/9/14; Planning Commission Approved Ext 1 9/15/16; Amended by CUP 3586 10/26/17	Call 559-600-4230 for information
3/27/2014	RE Tranquility #3	CUP 3453	028-101-70ST etal	seven miles southwest of the community of Tranquility	AE-20	200	Solar Facility	CM	3453	EIR 6330	15	n/a	Planning Commission Approved; EIR Certified 10/9/14; Planning Commission Approved Ext 1 9/15/16; Amended by CUP 3587 10/26/17	Call 559-600-4230 for information
3/27/2014	RE Tranquility #4	CUP 3454	028-101-51T etal	seven miles southwest of the community of Tranquility	AE-20	200	Solar Facility	CM	3454	EIR 6330	35	n/a	Planning Commission Approved; EIR Certified 10/9/14; Planning Commission Approved Ext 1 9/15/16; Amended by CUP 3587 10/26/17	Call 559-600-4230 for information
3/27/2014	RE Tranquility #5	CUP 3455	038-320-02T etal	seven miles southwest of the community of Tranquility	AE-20	200	Solar Facility	CM	3455	EIR 6330	40	n/a	Planning Commission Approved; EIR Certified 10/9/14; Planning Commission Approved Ext 1 9/15/16	Call 559-600-4230 for information
3/27/2014	RE Tranquility #6	CUP 3456	038-320-16T etal	seven miles southwest of the community of Tranquility	AE-20	200	Solar Facility	CM	3456	EIR 6330	35	n/a	Planning Commission Approved; EIR Certified 10/9/14; Planning Commission Approved Ext 1 9/15/16	Call 559-600-4230 for information
3/27/2014	RE Tranquility #7	CUP 3457	038-320-17T etal	seven miles southwest of the community of Tranquility	AE-20	400	Solar Facility	CM	3457	EIR 6330	20	n/a	Planning Commission Approved; EIR Certified 10/9/14; Planning Commission Approved Ext 1 9/15/16	Call 559-600-4230 for information

3/27/2014	RE Tranquillity #8	CUP 3458	028-111-60ST etal	seven miles southwest of the community of Tranquillity	AE-20	1432	Solar Facility	CM	3458	EIR 6330	40	n/a	Planning Commission <b>Approved</b> ; EIR Certified 10/9/14; Planning Commission <b>Approved</b> Ext 1 9/15/16	Call 559-600-4230 for information
12/12/2013	Wellhead Renewable Energy LLC	CUP 3434	085-030-57S,58S	S of W. Jayne btwn S. El Dorado & S. Alpine	AE-20	627.56	Solar Facility	CMM	3434	6784		3219	<b>Withdrawn</b> 5/18/15	Call 559-600-4230 for information
12/9/2013	Green Light Energy Corp.	CUP 3433	158-203-18	S. Side Thermal E. of Piedra Rd.	AE-160	12	Solar farm	EJ	3433	6783		n/a	Planning Commission <b>Denied</b> 5/22/14	Call 559-600-4230 for information
10/3/2013	Green Light Energy Corp.	CUP 3426	158-203-69	S Side N Piedra Rd btwn Thermal Rd & Cobblestone Ln	AE-160	17.7	Solar farm	EJ	3426	6757		AP 5511	<b>Withdrawn</b> 6/18/14	Call 559-600-4230 for information
7/30/2013	NorthLight Power LLC	CUP 3413	019-040-6S,7,10;019-050-55ST,56ST,60S,61ST ;019-110-17S,18S	S. Side Whitesbridge btwn San Bernardino and Ohio Ave	AE-20	43	New gen-tie route for approved solar farm	DC	3413	6718	115 kV Gen/Tie line	n/a	Planning Commission <b>Approved</b> 11/14/13	Call 559-600-4230 for information
10/10/2012	SH3 Solar LLC	CUP 3389	128-450-58	32180 Auberry Road	M-3(c)	68.28	Solar farm	EJ	3389	6619	2	n/a	Planning Commission <b>Approved</b> Ext 4 6/7/18	Call 559-600-4230 for information
8/24/2012	Muscat Solar Farm	CUP 3384	020-200-32,35S,84S-88S,41S	S of W. Muscat btwn S. Butte & S. Lake	AE-20	102.5	Solar Facility	DC	3384	6596		n/a	<b>Withdrawn</b> 5/10/16	Call 559-600-4230 for information
8/17/2012	31 HB 8ME LLC	CUP 3381	017-051-56	E. of the intersection of Russell Ave. and Jensen	AE-40	159	Solar farm	EJ	3381	6583		AP 4248	<b>Withdrawn</b> 2/28/13	Call 559-600-4230 for information
8/16/2012	Giffen Solar Park LLC	CUP 3383	038-080-11S; 31S	N Side W Mtn View Av btwn S Oil City Av & S Stanislaus Av	AE-20	316.79	Solar farm	DC	3383	6585	20	AP 4249	Planning Commission <b>Approved</b> Ext 1 6/30/16	Call 559-600-4230 for information
8/13/2012	31 HB 8ME LLC	CUP 3382	017-060-31	E. side of Russell Ave, btwn. Jensen Ave. and North Ave.	AE-40	628.4	Solar farm	EJ	3382	6584		AP 2890	<b>Withdrawn</b> 2/28/13	Call 559-600-4230 for information
7/5/2012	Marco Lara (Gestamp Solar)	CUP 3361	055-250-04T	S Side W Harlan btwn Hwy 41 & Riverdale Ditch County Canal SW & NE of W Huntsman & S Placer Av btwn S Colusa Av & Yuba Av	AE-20	19.16	Solar farm	EJ	3361	6528		n/a	<b>Withdrawn</b> 10/22/14	Call 559-600-4230 for information
5/16/2012	Gestamp Solar	CUP 3369	030-100-18S,20S,23S	Huntsman & S Placer Av btwn S Colusa Av & Yuba Av	AE-20	125.21	Solar farm	EJ	3369	6543		AP 1510	<b>Withdrawn</b> 5/31/13	Call 559-600-4230 for information
4/16/2012	Stan Battersby	CUP 3362	333-300-32,34	4735 S. Englehart Avenue, Reedley	AE-20	44.18	Solar farm	DC	3362	6530	1.25	AP 4727	BOS <b>Approved</b> 6/18/13	Call 559-600-4230 for information
4/16/2012	Kara Haugen	CUP 3363	350-190-01	5652 S. Bethel	AE-20	14	Solar farm	DC	3363	6531	1	n/a	Planning Commission <b>Approved</b> 11/15/12	Call 559-600-4230 for information
4/10/2012	WSF PV2 LLC	CUP 3460	085-040-21S	18393 W. Jayne Avenue, Huron	AE-40	156.23	Solar Expansion	EJ	3460	6829			<b>Withdrawn</b> 4/17/15	Call 559-600-4230 for information
3/13/2012	Jeff Gatzka	CUP 3359	335-140-31	8570 S. Cedar Ave.	AE-20	17.17	Photovoltaic Solar Facility	DC	3359	6514	2.3	n/a	Planning Commission <b>Approved</b> 6/21/12	Call 559-600-4230 for information
2/3/2012	Schindler South Solar Center LLC	CUP 3356	060-041-03	S side Paige Av btwn S Yuba & S Butte	AE-20	383.98	Solar Facility	EJ	3356	6502		n/a	<b>Withdrawn</b> 10/23/14	Call 559-600-4230 for information
1/13/2012	Annedale Solar LLC	CUP 3354	019-160-35ST	Btwn W North & S Washoe Av	AE-20	236.26	Solar Facility	DC	3354	6495		n/a	<b>Withdrawn</b> 4/8/13	Call 559-600-4230 for information
12/30/2011	SunPower	CUP 3350	011-130-17ST&18ST;012-110-05ST,08ST,09ST,22S T,24ST-27ST;121-120-15ST	Approx 4m NW of Mendota btwn N. Washoe & N. Douglas	AE-20	1890.34	Solar Facility	DC	3350	6485		n/a	<b>Closed</b> due to inactivity 3/28/17	Call 559-600-4230 for information
11/15/2011	Gestamp Asetym Solar	CUP 3347	038-080-24T	S side W Nebraska align Btwn SR 33 & S Monterey align	AE-20	160±	Solar Facility	DC	3347	6470		n/a	<b>Withdrawn</b> 7/1/13	Call 559-600-4230 for information
11/8/2011	Gestamp Asetym Solar	CUP 3345	119-110-26,29;019-170-29-32	E. Side San Diego btwn W Jensen & W Central	AE-20	960±	Solar Facility	DC	3345	6467		n/a	<b>Withdrawn</b> 7/1/13	Call 559-600-4230 for information
10/31/2011	Brannon Solar LLC	CUP 3344	011-050-09ST	NW 4 of Sec 8 T13S R13E S. Side Bullard near Fairfax	AE-20	156.3	Solar Facility	EJ	3344	6458		n/a	<b>Withdrawn</b> 9/9/14	Call 559-600-4230 for information
9/14/2011	Cenergy Power	CUP 3342	373-120-58; 01	23039 E Manning	AE-20	18.53	Solar Facility	EJ	3342	6445	3	n/a	Planning Commission <b>Approved</b> 6/21/12	Call 559-600-4230 for information
8/24/2011	Marco Lara (Gestamp Solar)	CUP 3341	055-380-02	S side W Riverdale btwn S Elm & East St	AE-20	58	Solar Facility	EJ	3341	6441		AP 3648	<b>Withdrawn</b> 7/1/13	Call 559-600-4230 for information
6/22/2011	Gestamp Solar	CUP 3334 - REVISED	005-060-17S,18S	N side W Nees bwtm Millux & Russell	AE-20	167.42	Solar Facility	DC	3334	6426	20	AP 2047	Planning Commission <b>Approved</b> Ext 3 12/8/16	Call 559-600-4230 for information

6/21/2011	Frontier Renewables LLC	CUP 3333	060-020-05ST	N side Paige btwn S Sonoma & S Napa	AE-20	500	Solar Facility	DC	3333	6425	60	n/a	Planning Commission <b>Approved</b> 4/10/14	Call 559-600-4230 for information
6/14/2011	Silverado Power LLC	CUP 3327	019-050-61ST	W. side San Bernardino btwn California and Whiresbridge	AE-20	321.04	Solar Facility	DC	3327	6412	70	n/a	Planning Commission <b>Approved</b> Ext 1 2/12/15; Amended by CUP 3513, CUP 3514 & CUP 3515 4/14/16	Call 559-600-4230 for information
6/14/2011	Silverado Power LLC	CUP 3328	019-040-05ST	N. side Whitesbridge btwn. San Diego and Washoe	AE-20	161.06	Solar Facility	DC	3328	6413	40	n/a	Planning Commission <b>Approved</b> Ext 1 2/12/15	Call 559-600-4230 for information
6/14/2011	Silverado Power LLC	CUP 3329	006-150-15S; 006-160-17S, 25S, 26S	btwn N Fairfax and W Nees	AE-20	489.03	Solar Facility	EJ	3329	6414		AP 2699, 2628, 2700	<b>Withdrawn</b> 4/18/14	Call 559-600-4230 for information
6/14/2011	Silverado Power LLC	CUP 3330	040-160-21 etal	S. side W. Kamm btwn Yuba and Colusa	AE-20	292.59	Solar Facility	EJ	3330	6415		n/a	<b>Withdrawn</b> 5/16/16	Call 559-600-4230 for information
6/14/2011	Three Rocks Solar LLC	CUP 3331	038-060-03	S side Rose Av btwn S Douglas & Ormsby Av	AE-20	100	Solar Facility	DC	3331	6419	13	n/a	Planning Commission <b>Approved</b> Ext 1 6/18/15	Call 559-600-4230 for information
5/5/2011	RE Adams East, LLC	CUP 3322	028-071-32ST	E. side SR 33 btwn South Ave. and W. Manning	AE-20	319	Solar Facility	DC	3322	6395	37	n/a	Planning Commission <b>Approved</b> 10/18/12	Call 559-600-4230 for information
5/4/2011	Placer Solar LLC	CUP 3321	033-160-09S	W. side Yuba btwn intersection of Placer and Manning	AE-20/AL-20	164.52	Solar Facility	DC	3321	6394	20	n/a	Planning Commission <b>Denied</b> 8/9/12; BOS <b>Approved</b> 10/23/12, Recinded 10/28/14	Call 559-600-4230 for information
2/28/2011	Francisco Sanchez (Gestamp Solar)	CUP 3316	028-050-03	S. side W. Adams btwn Washoe and Lyon Avenues	AE-20	158.19	Solar Facility	EJ	3316	6366		AP 1781	<b>Withdrawn</b> 7/12/12	Call 559-600-4230 for information
2/28/2011	Gestamp Solar	CUP 3317	027-060-33	S. side W. Lincoln btwn Hudson and Fairfax Avenues	AE-20	80	Solar Facility	EJ	3317	6367		AP 1907	<b>Withdrawn</b> 7/9/12	Call 559-600-4230 for information
2/28/2011	GASNA 16P LLC	CUP 3318	329-030-17	N. side Central btwn Fig and Elm	AE-20	18.66	Solar Facility	RJ	3318	6368	2.5	AP 5446	Planning Commission <b>Approved</b> 10/20/2011	Call 559-600-4230 for information
2/28/2011	Dan Predpall (Rose Solar)	CUP 3320	033-020-23	N Side Dinuba Av btwn Yuba and Placer	AE-20	66.81	Solar Facility	DC	3320	6390		n/a	<b>Withdrawn</b> 9/9/13	Call 559-600-4230 for information
2/25/2011	Environmental Impact Report (EIR) No. 6343 - Recurrent Energy – RE Tranquillity	CUP to be assigned	multiple	seven miles southwest of the community of Tranquillity	AE-20	3575	Solar farm	DC/TM	-	6343		See RFP	Application <b>withdrawn</b> by applicant.	Call 559-600-4230 for information
2/1/2011	NorthLight Power LLC	CUP 3314	019-050-55- 56	S. Side Whitesbridge btwn San Bernardino and Ohio Ave	AE-20	640	Solar Facility	DC	3314	6349	60	n/a	Planning Commission <b>Approved</b> Ext 1 5/22/14	Call 559-600-4230 for information
1/26/2011	Marco Lara (Gestamp Solar)	CUP 3313	055-240-05, 055-250-25	W. side SR 41 btwn Harlan and Riverdale Aves.	AE-20	120	Solar Facility	DC	3313	6348		AP 3647 & 7485	<b>Withdrawn</b> 7/9/12	Call 559-600-4230 for information
12/1/2010	RE Jayne East LLC	CUP 3308	073-060-12 & 55S	West Jayne Avenue and Alpine Avenue	AL-20	120	Solar Facility	DC	3308	6317		n/a	<b>Withdrawn</b> 5/1/13	Call 559-600-4230 for information
12/1/2010	RE Kamm LLC	CUP 3309	040-080-35S	S. side Kamm btwn Butte and Napa	AE-20	240	Solar Facility	DC	3309	6318		AP 2093	Planning Commission <b>Denied</b> 4/11/13	Call 559-600-4230 for information
11/8/2010	Vie-Del Company	CUP 3305	042-180-04, 05 & 042-170-16S	Nebraska between Cedar and Chestnut	AE-20; M-1 and M-3	7.98	PV Solar for existing fruit processing opertaion	DC	3305	6309	0.02	n/a	Planning Commission <b>Approved</b> 3/10/11	Call 559-600-4230 for information
7/28/2010	Boulevard Associates LLC	CUP 3301	050-080-25s	Cerini and Butte (NW of inter of Mt. Whitney and Lassen (Five Points))	AE-20	320	Solar Facility	DC	3301	6287	40	AP 2123	Planning Commission <b>Approved</b> 10/20/2011	Call 559-600-4230 for information
7/23/2010	Gestamp Solar/Francisco Sanchez	CUP 3299	005-060-17s	NW of Nees and Millux (Firebaugh)	AE-20	157.88	Solar Facility	EJ	3299	6285		AP 2043	<b>Withdrawn</b> 4/10/12	Call 559-600-4230 for information
7/23/2010	Francisco Sanchez (Gestamp Solar)	CUP 3300	005-040-18s 005-070-16s	NE of int. of Russell and Nees (Firebaugh)	AE-20	193	Solar Facility	EJ	3300	6286		AP 2040 et.al.	<b>Closed</b> by Policy Planning due to no progress 4/15/14	Call 559-600-4230 for information
6/23/2010	Sr Solis Oro Loma Teresina	CUP 3296	005-040-15s	E side of N Russell Ave btwn W Nees and W Althea Aves	AE-20	156	Photovoltaic Solar Facility	EJ	3296	6278		AP 1305	<b>Withdrawn</b> 5/26/15	Call 559-600-4230 for information

6/23/2010	Sr Solis Oro Loma LLC	CUP 3297	005-040-17s	W side of N Russell btwn W Nees and W Althea Aves	AE-20	156	Solar Facility	EJ	3297	6279	20	AP 1425	Planning Commission <b>Approved</b> Ext 1 10/8/15	Call 559-600-4230 for information
6/14/2010	Westlands Solar Farms LLC	CUP 3294	085-040-21S	S side W Jayne btwn 5 and S Lassen	AE-40	90.5	Solar Facility	EJ	3294	6272	20	AP 365	Planning Commission <b>Approved</b> 10/20/2011	Call 559-600-4230 for information
6/1/2010	Whitney Point Solar LLC	CUP 3295	060-042-16s, 17s	E side of S Lake Ave btwn W Paige and W Jeffrey Aves	AE-40	320	Solar Facility	EJ	3295	6277	40	n/a	Planning Commission <b>Approved</b> Ext 3 6/18/15; Amended by CUP 3518 2/18/16	Call 559-600-4230 for information
5/3/2010	GA Solar	CUP 3291	040-080-15s	SE corner of Kamm and Butte (Helm)	AE-20	318.18	Solar Facility	EJ	3291	6261	27	AP 1387	Planning Commission <b>Approved</b> Ext 4 12/8/16; Amended by CUP 3578 6/8/17	Call 559-600-4230 for information
5/3/2010	Joe Contreras (GA Solar)	CUP 3292	040-070-41	NE corner of El Dorado align and Kamm (Helm)	AE-20	317.57	Solar Facility	DC	3292	6262	46	AP 2105	Planning Commission <b>Approved</b> Ext 2 1/15/15	Call 559-600-4230 for information
9/14/2009	Solargen Energy, Inc.	CUP 3273	009-060-06S etal;017-010-02S etal	W of I-5 near Little Panoche Recreation Area & border of San Benito Co	AE-20,40	1671	Photovoltaic Solar Facility	DC	3273	6151		AP 972 etal	<b>Withdrawn</b> 6/6/10	Call 559-600-4230 for information
6/23/2008	Eslinger Biodiesel	CUP 3241	012-060-045, 56S	35851 W. Bullard	AE-20	1671	Solid waste processing facil (biodiesel production). Rev 7/28/08 to include solar farm & fuel island	JA	3241	6000	3	AP 972 etal	Planning Commission <b>Approved</b> 10/2/08	Call 559-600-4230 for information



Modesto

Fresno

Kings Canyon National Park

Sequoia & Kings Canyon National Parks

Sequoia National Park

