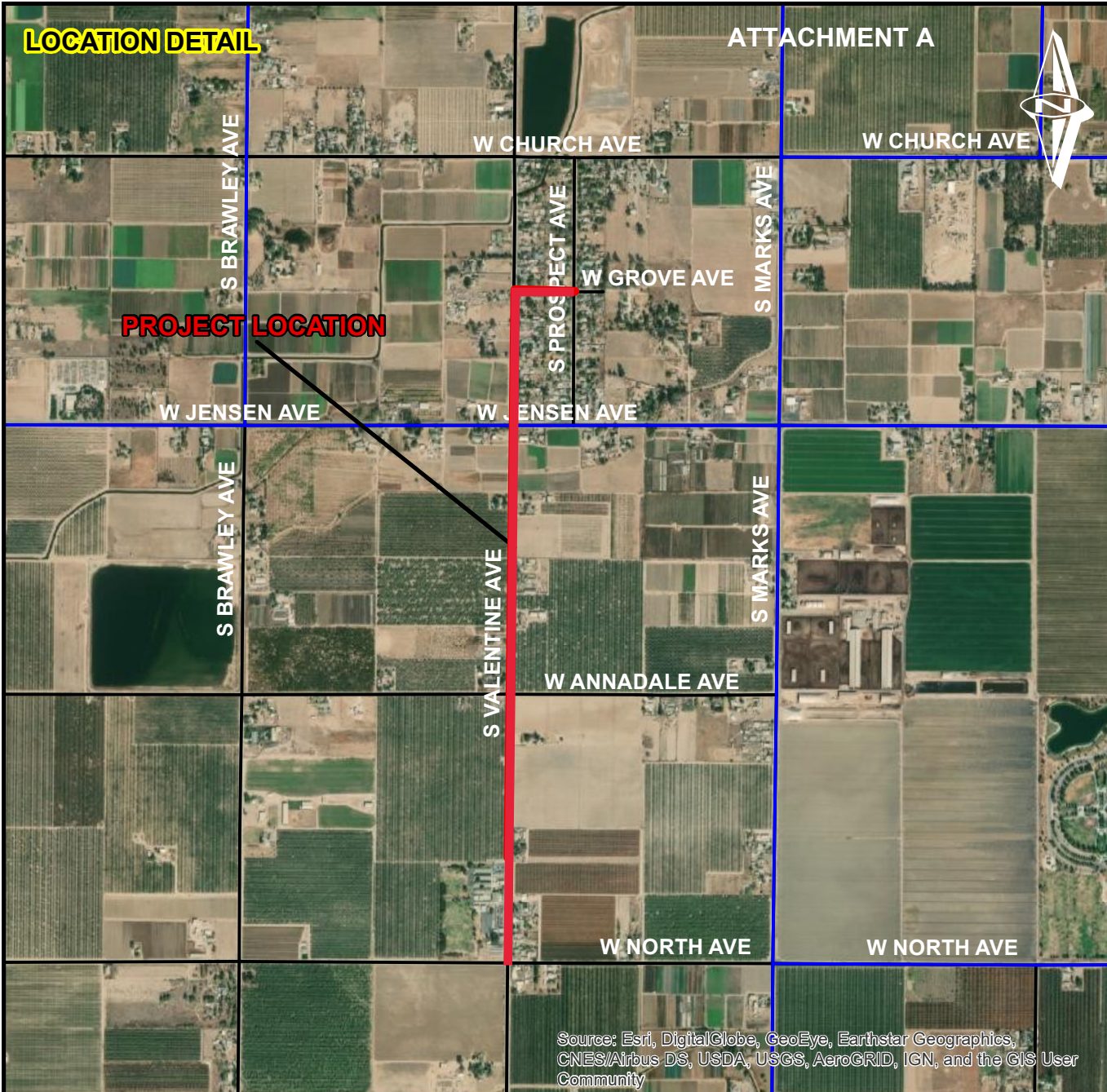
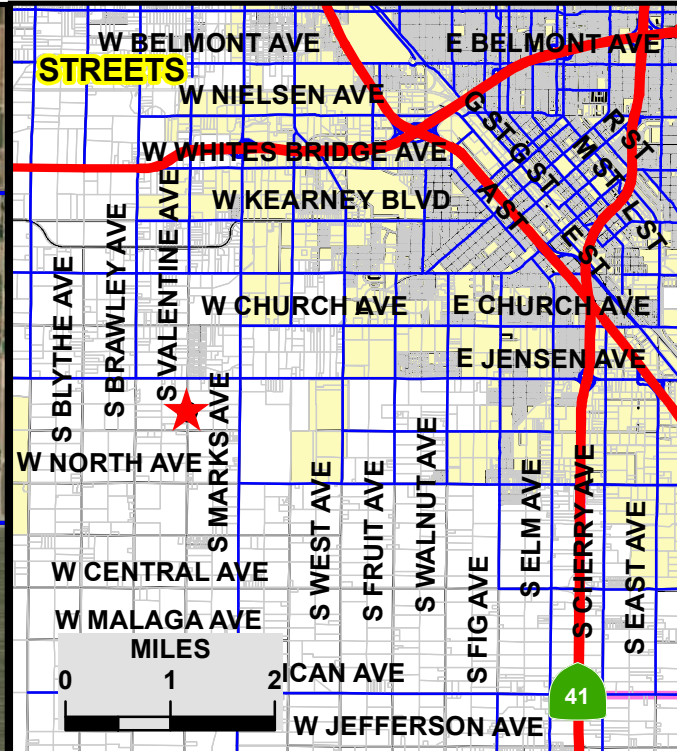


LOCATION DETAIL

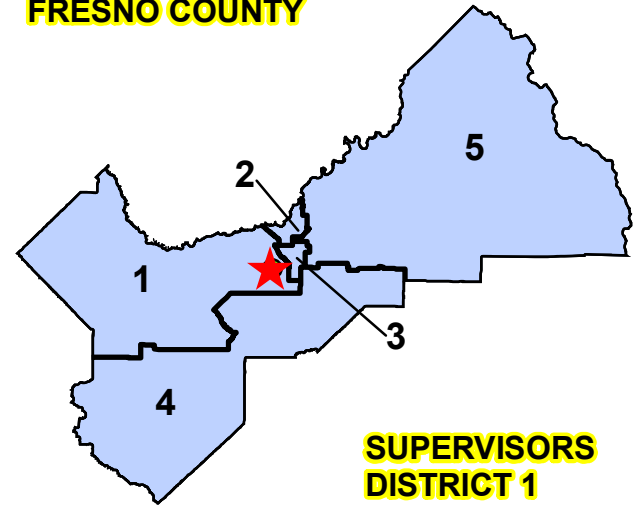
ATTACHMENT A



PROJECT LOCATION



FRESNO COUNTY



SUPERVISORS DISTRICT 1

Source: Esri, DigitalGlobe, GeoEye, Earthstar Geographics, CNES/Airbus DS, USDA, USGS, AeroGRID, IGN, and the GIS User Community

	DATE:	SCALE IN FEET
DESIGNED: C.M.	09/30/2020	
DRAWN: C.M.	09/30/2020	
STATE BRIDGE NO.	N/A	



DEPARTMENT OF PUBLIC WORKS & PLANNING

ACTIVE TRANSPORTATION PROGRAM - WEST PARK PEDESTRIAN PATHWAY