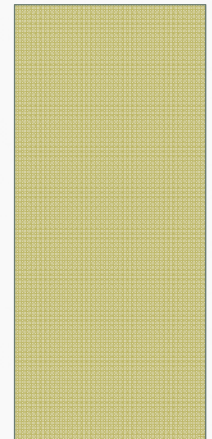


UNDERSTANDING PARCEL NUMBERS

FRESNO COUNTY ASSESSOR-RECORDER



January 21, 2014

BASICS

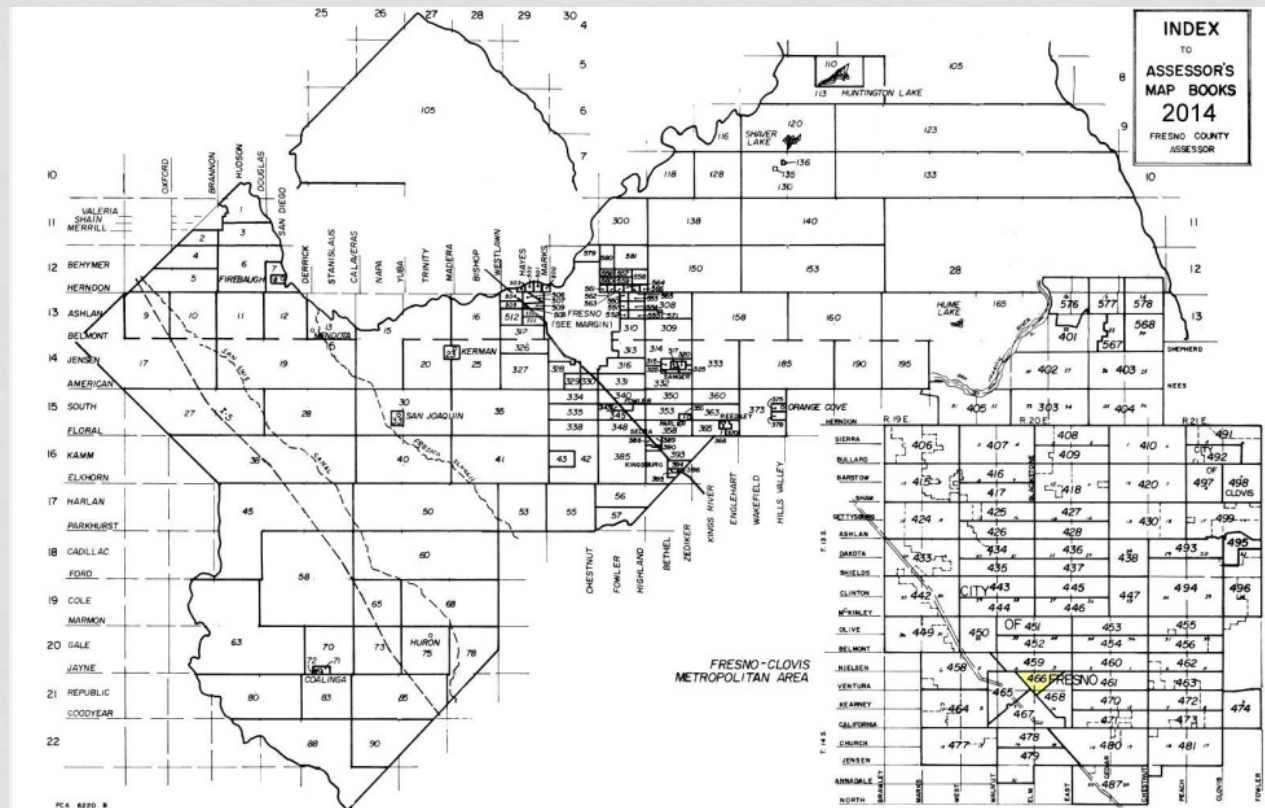
Assessor Parcel Numbers (APNs) are unique identifiers designed to help the Assessor, Tax Collector, other government agencies and property owners track each parcel. In Fresno County APNs consist of eight digits and a possible suffix of one or two letters.

The basic layout for parcel numbers is 123-456-78xy. Mobile homes not on a permanent foundation have slightly different rules.

EXAMPLE

APN 466-160-01T

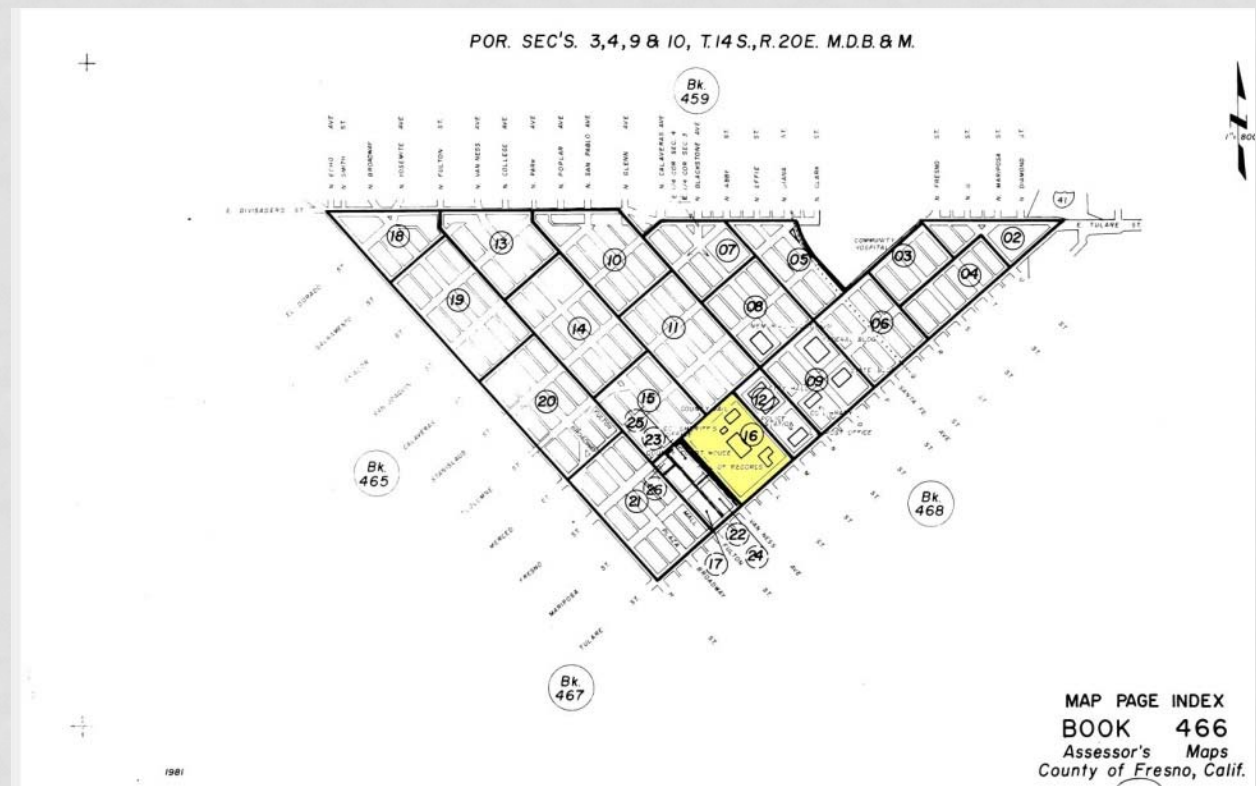
The first three numbers are the book the parcel is located in. The index map on the right shows all of the different books Fresno County is divided into. Book 466 is in downtown Fresno (highlighted).



EXAMPLE

APN 466-160-01T

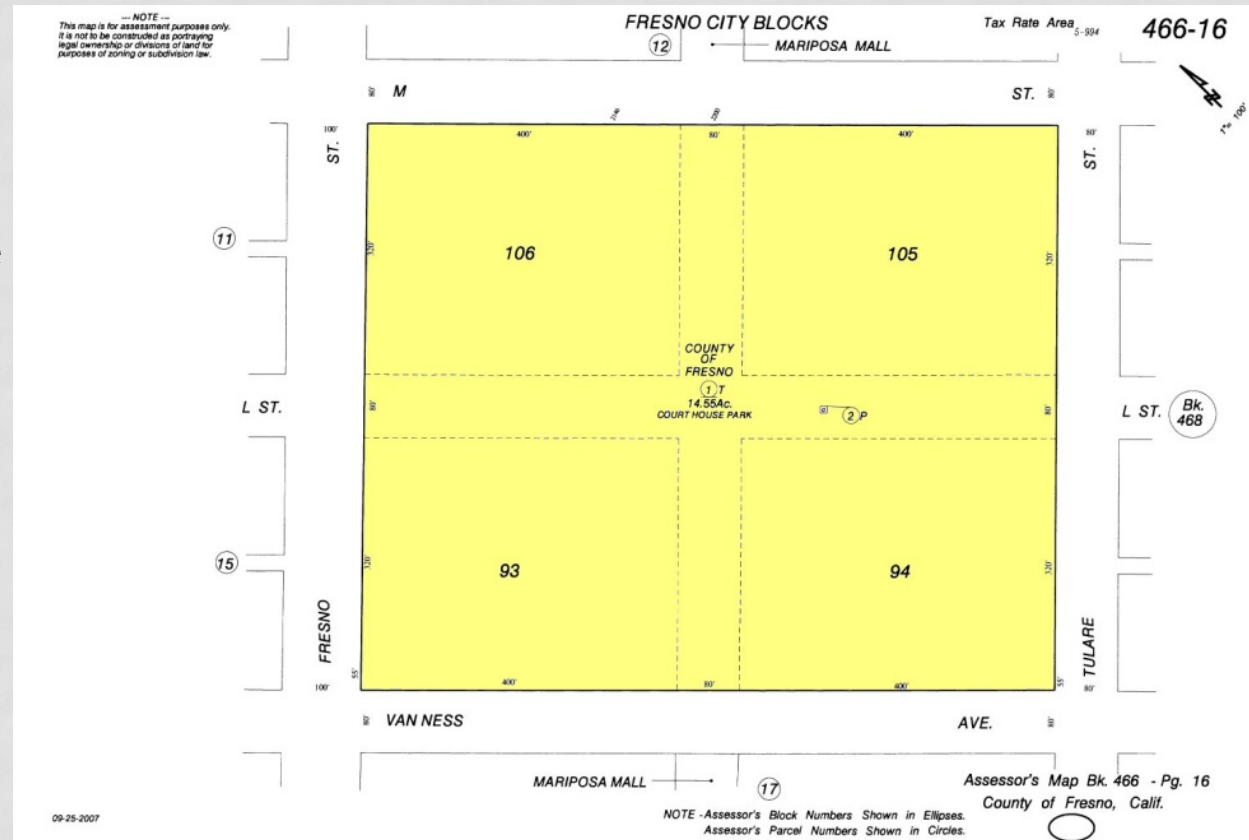
The next two numbers are the page within the book. The highlighted area on the index page shows where it is located.



EXAMPLE

APN 466-160-01T

The 6th number is the block on the page. If the block number is "0", there is only one block on the page. There can be up to nine blocks on a page. The final two numbers are the specific parcel on the block.



LETTERS AT THE END OF A PARCEL NUMBER

The letters at the end of some parcel number are used for special circumstances.

- M Mineral Rights only (oil, natural gas, etc.)
- P Possessory Interest (you don't own the land but have something that can be taxed)
- S Surface Rights only (someone else owns the mineral rights)
- T Tax Exempt (usually government owned)
- U Utility (railroad, telephones, etc.)

Occasionally two are used, such as a government building with only surface rights, or a railroad that owns mineral rights.

MOBILE HOME APNS

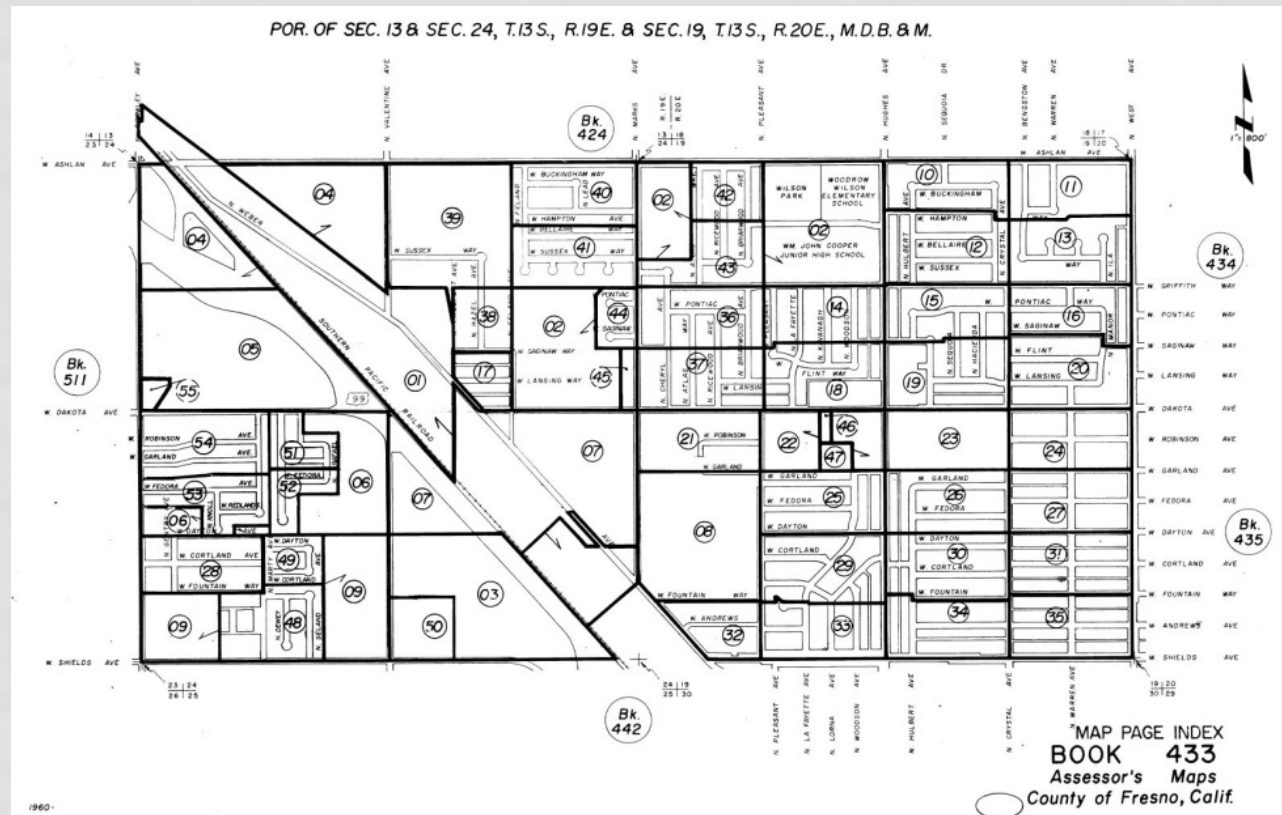
Parcel numbers for mobile homes are a little different. In all instances these are mobile homes that are not on a permanent foundation.

There are two numbering systems depending on whether it is in a mobile home park or not. The APNs are still 8-digits long and all start with a "7" in the first position.

EXAMPLE IN A MOBILE HOME PARK

APN 743-301-02

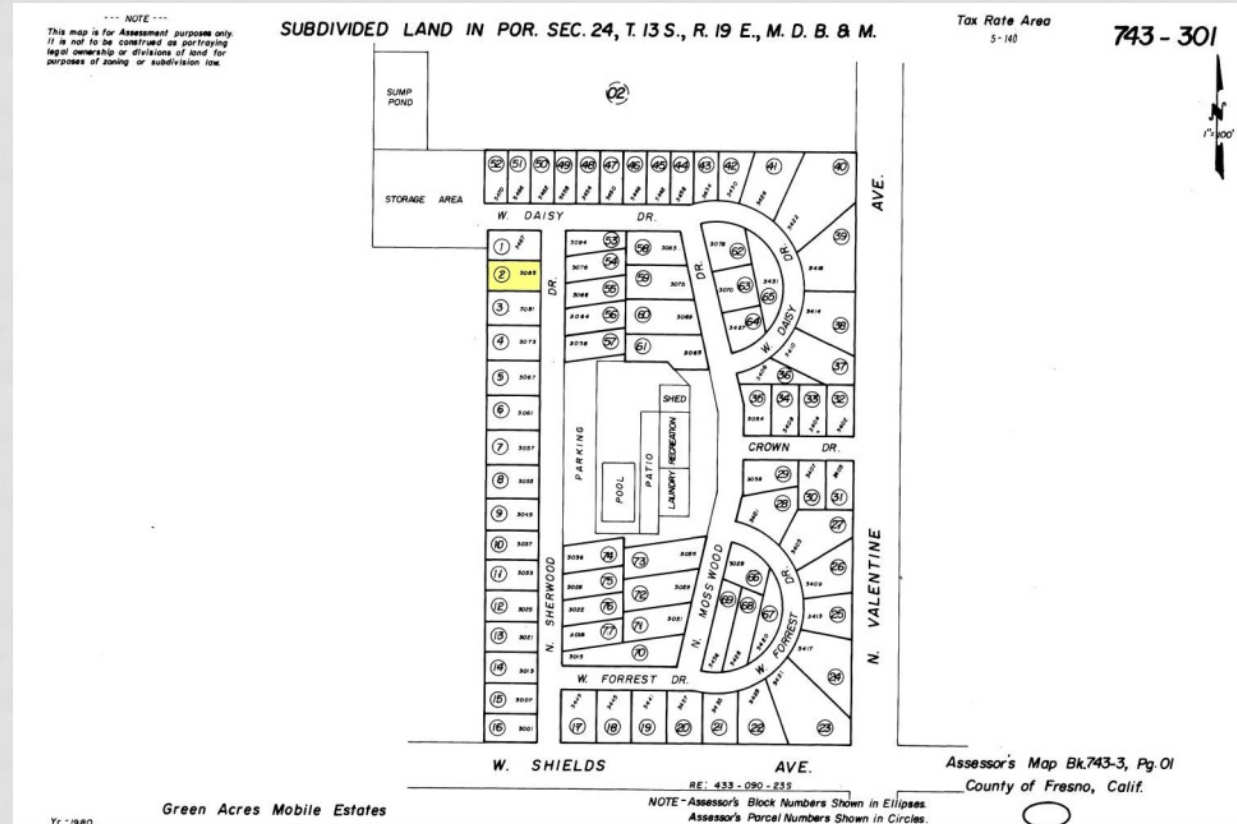
If you were looking for the general area a mobile home park was in, numbers 2, 3 and 4 give the book number. This will not show the specific location of the park.



EXAMPLE IN A MOBILE HOME PARK

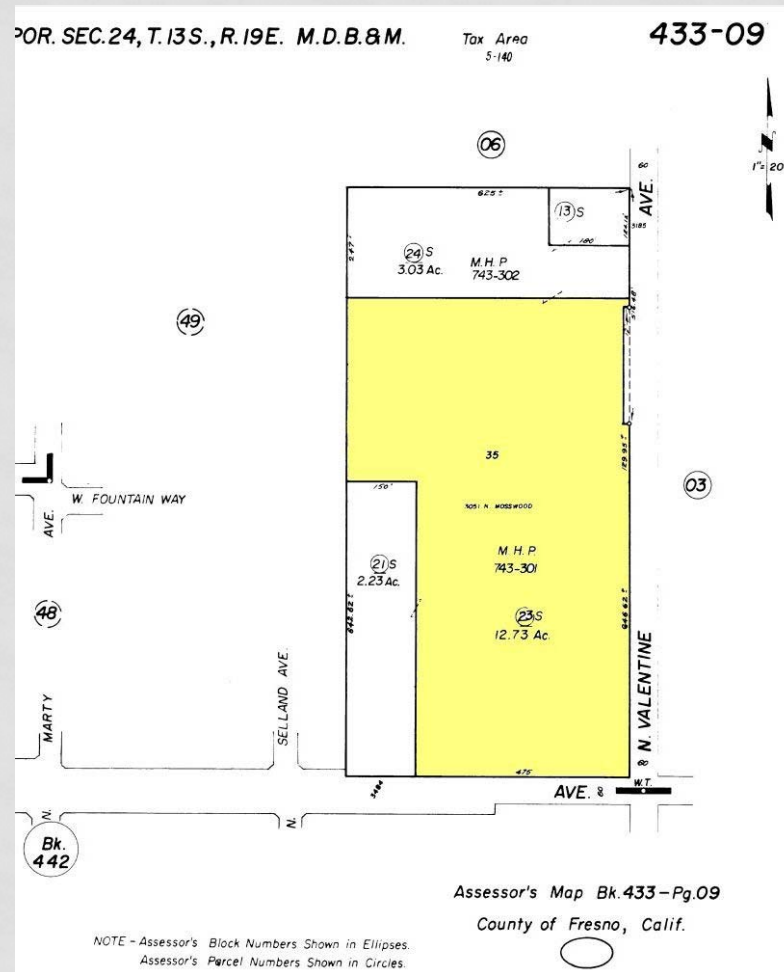
APN 743-301-02

The next two numbers are the page within the 700-series map book. In this example, it is page 01 of book 743-3. Lastly, the specific parcel on the page is two numbers.



EXAMPLE IN A MOBILE HOME PARK APN 743-301-02

The page within book 433 that the mobile home park is located on has the host parcel as a separate APN. It also has the book and page where the park can be found in the 700-series books.



EXAMPLE NOT IN A PARK

APN 715-890-06

There are no specific maps for mobile homes outside of a park, but you can find the "parent" or "host" parcel it is on by looking in the Subdivision Index. Mobile homes are always on the last page of the index.

Assessor's Office
County of Fresno

MAP BOOK INDEX TO SUBDIVISIONS

Map Book No. 158
Page 4 of 4

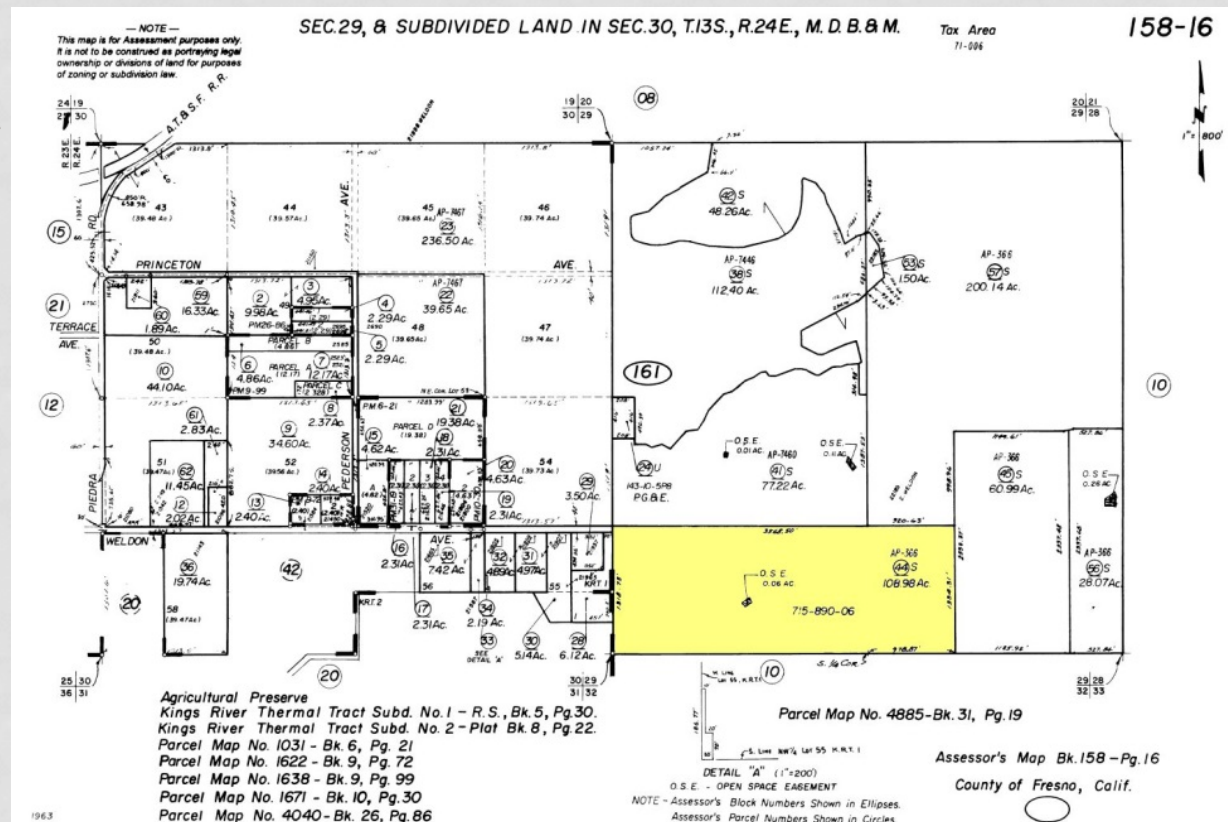
Recorders Ref.			Subdivision Name or Tr. No.	Map Page	Blks. - Lots - or Por.	Recorders Ref.			Subdivision Name or Tr. No.	Map Page	Blks. - Lots - or Por.
BK	VOL	PAGE				BK	VOL	PAGE			
			Township 13S, Range 23E						Township 13S, Range 24E (cont.)		
			Section 1-3	03					Section 28	10	
			4-9	02					29, 30	16	
			10-12	03					31	20	
			13-15	07					32, 33	10	
			16	06					34-36	11	
			17, 18	33							
			19-21	06					Mobile Home APN		Parent
			22-24	07					715-890-06		158-161-44S
			25, 26	15					715-890-08		158-061-08S
			27, 28	14					715-890-10		158-330-80
			29, 30	13					715-890-18		158-203-20
			31, 32	17					715-890-22		158-210-87
			33, 34	18	N1/2						
			33	28	S1/2						
			35	27	S1/2						
			35	19	N1/2						
			36	20							
			Township 13S, Range 24E								
			Section 1-3	05							
			4-8	04							
			9	04	S1/2						
			9	31	N1/2						
			10-12	24							
			13-15	09							
			16-21	08							
			22, 23	09							
			24	09	S1/2						
			25-27	11							

10/25/2012

EXAMPLE NOT IN A PARK

APN 715-890-06

Positions 5 and 6 will be "90" for all mobile homes not in a park. The last two numbers of the APN are the specific parcel. On a parcel map, both the host and mobile home APNs are listed.



This guide is to show you the basics of how parcels are organized. All maps used in the examples are available from the Fresno County Assessor's office or online.

Answers to questions can be found online at assessor.co.fresno.ca.us or by calling (559)600-3534 during business hours.